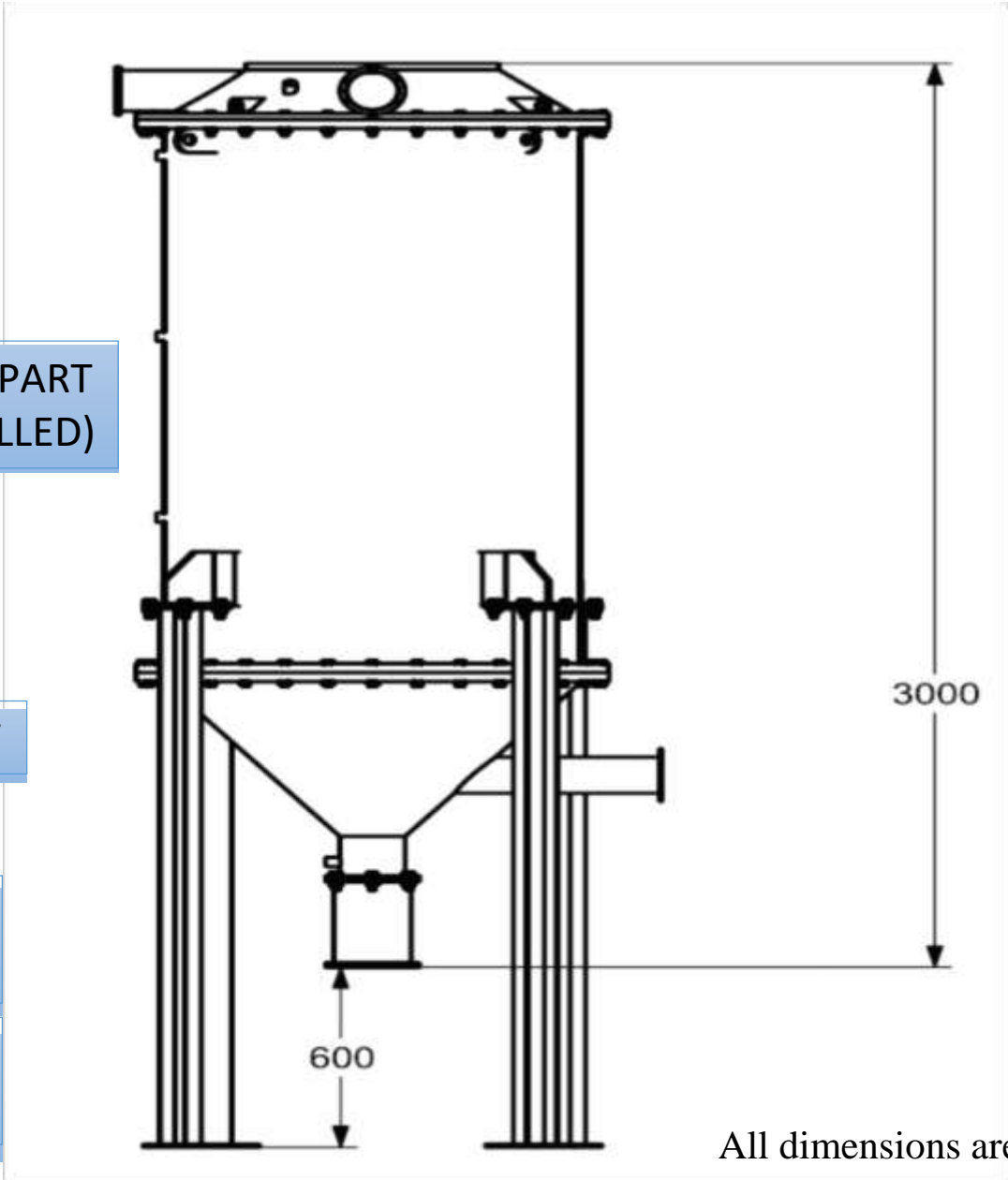
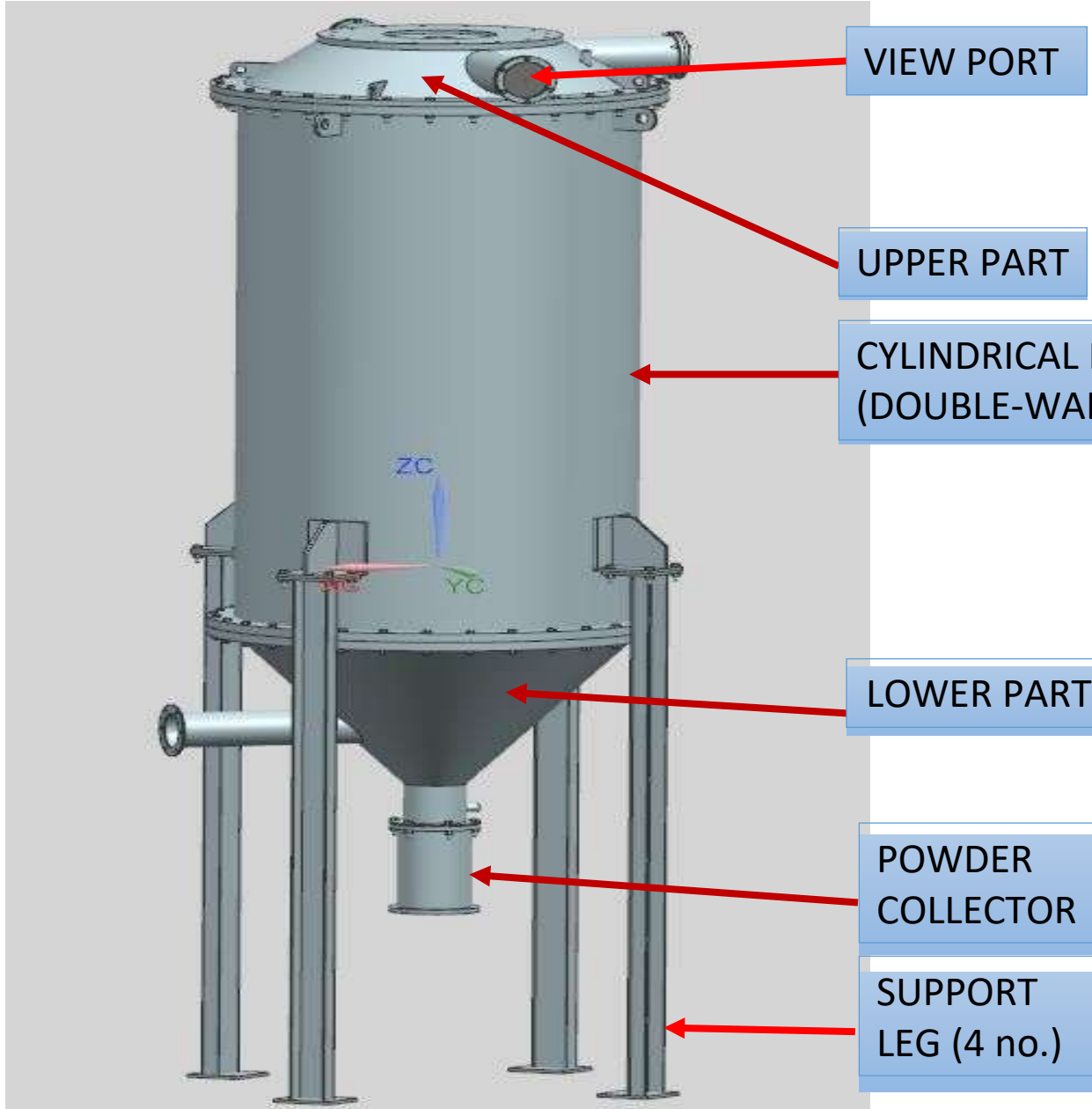


Specifications for the atomization chamber for gas-atomization

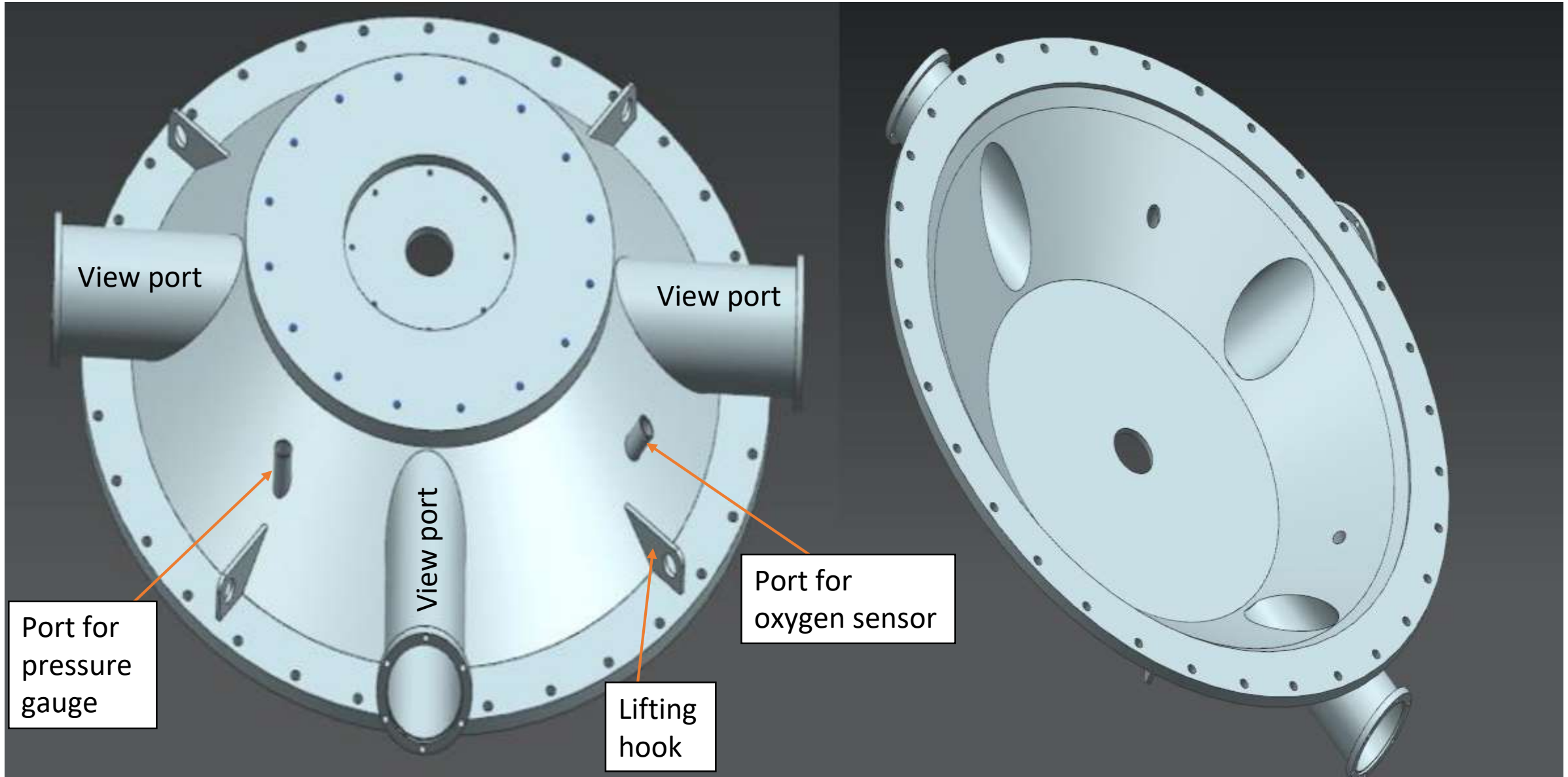
- All components and dimensions as per the drawings mentioned in this document.
- Material of construction: SS 304H
- Fastener: SS (Grade 5 / Grade F)
- Gas used in chamber: Air / Argon
- Leak-proof joints should be made using appropriate gaskets and checked using appropriate testing standards.
- The system (including the view-port glass, all the joints etc.) should sustain an internal pressure of +/- 0.5 bar (gauge pressure).
- Mill test Certificates / PMI Test report for the raw material should be submitted.
- Appropriate welding inspection should be conducted, and test report should be submitted.

Atomization chamber for gas-atomization

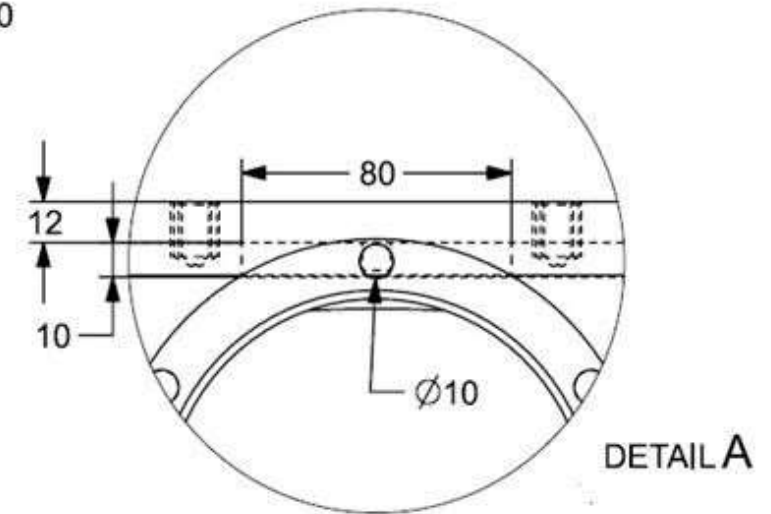
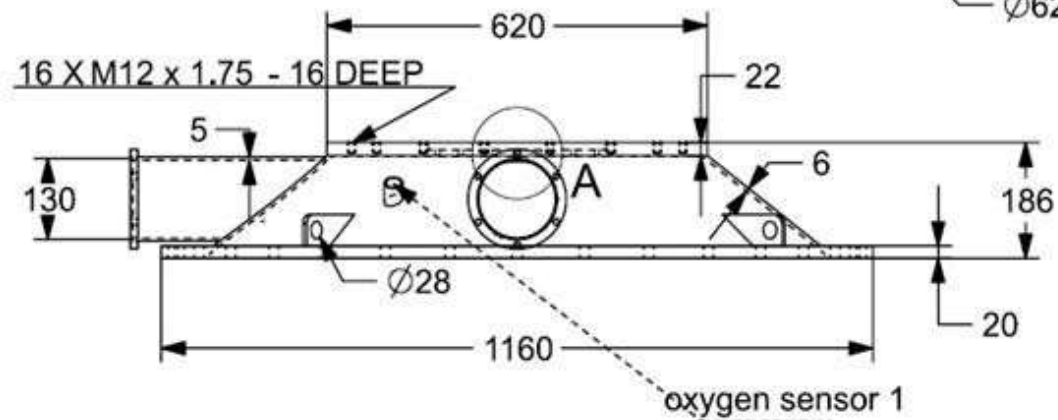
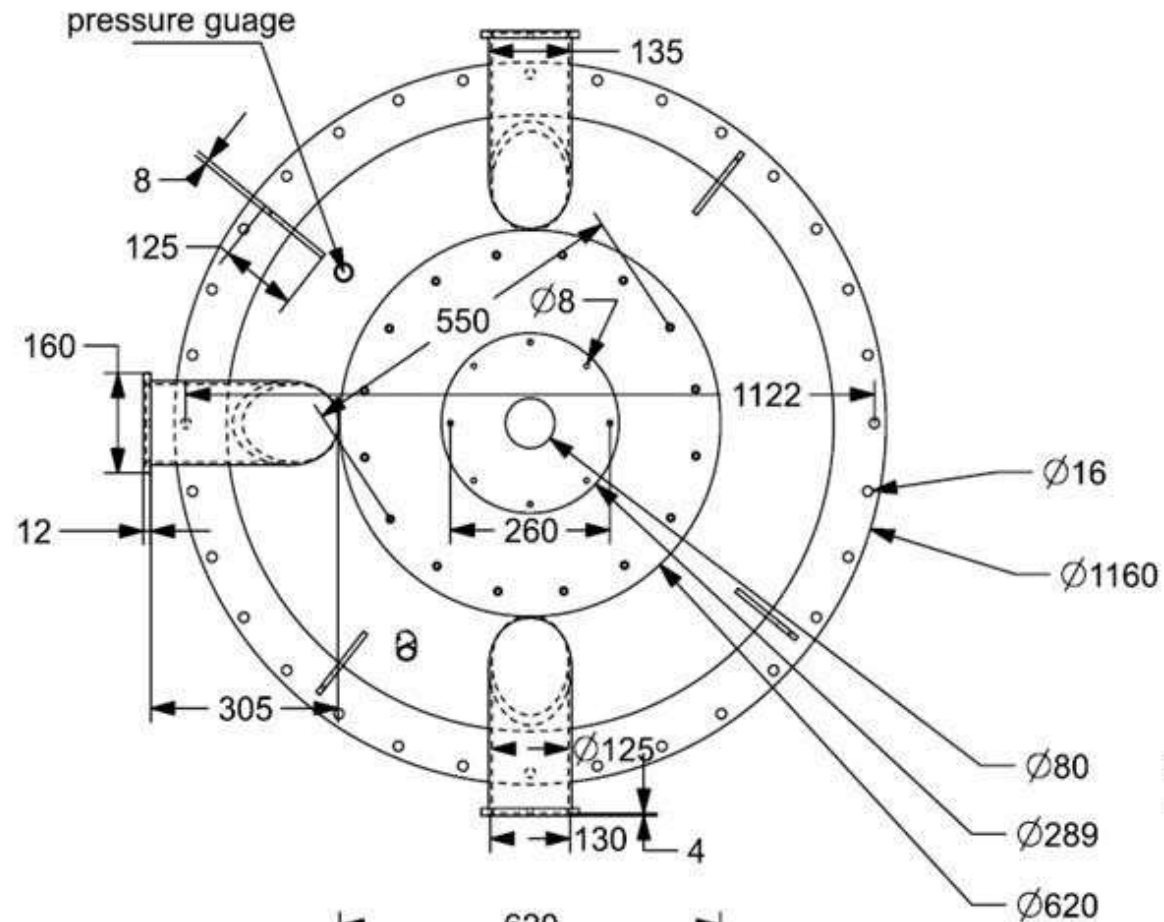


All dimensions are in mm

UPPER PART

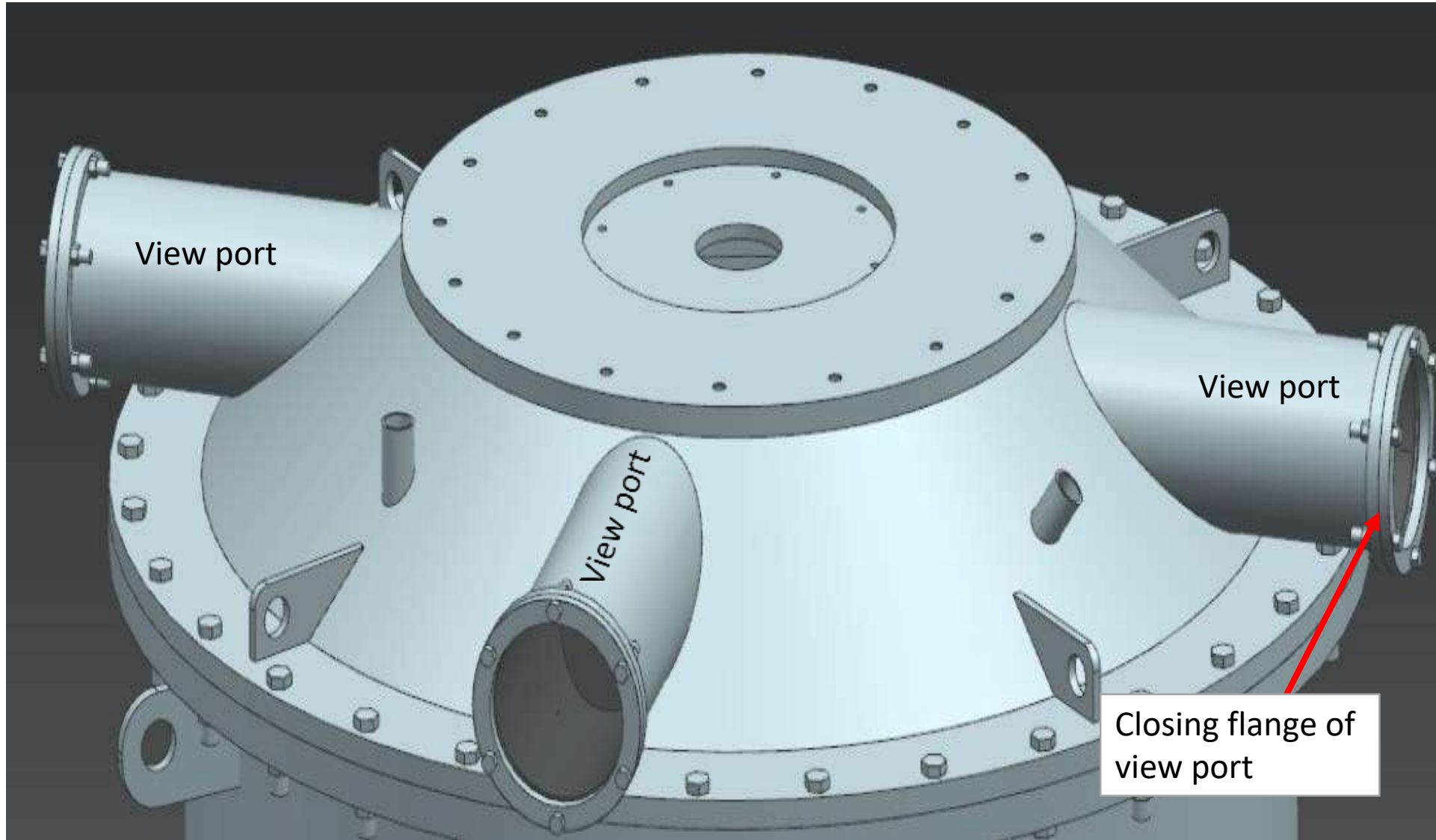


ENGINEERING
DRAWING OF
UPPER PART

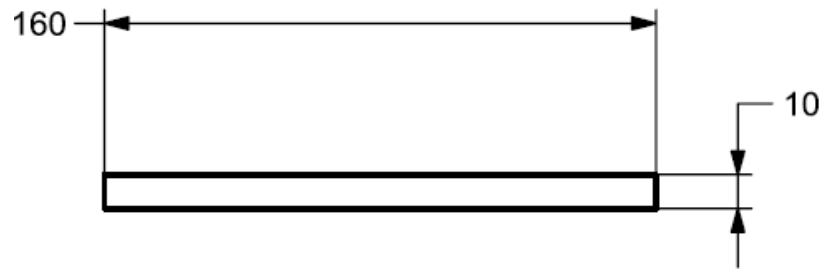
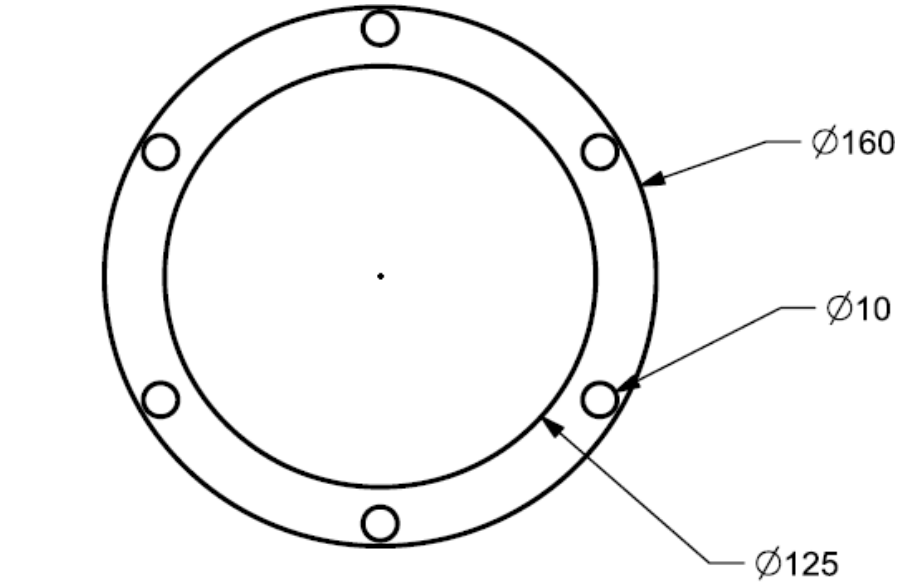


All dimensions are in mm

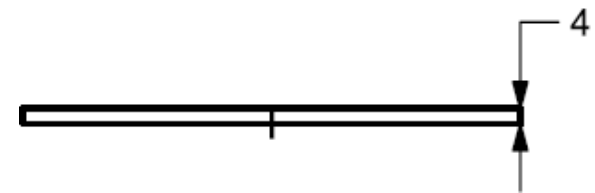
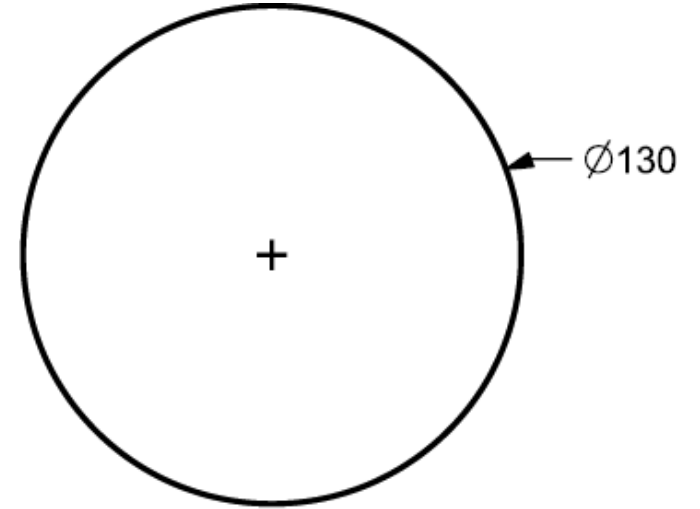
VIEW PORT (3 no.)



Closing part of view port (Covered with toughened glass with flange)



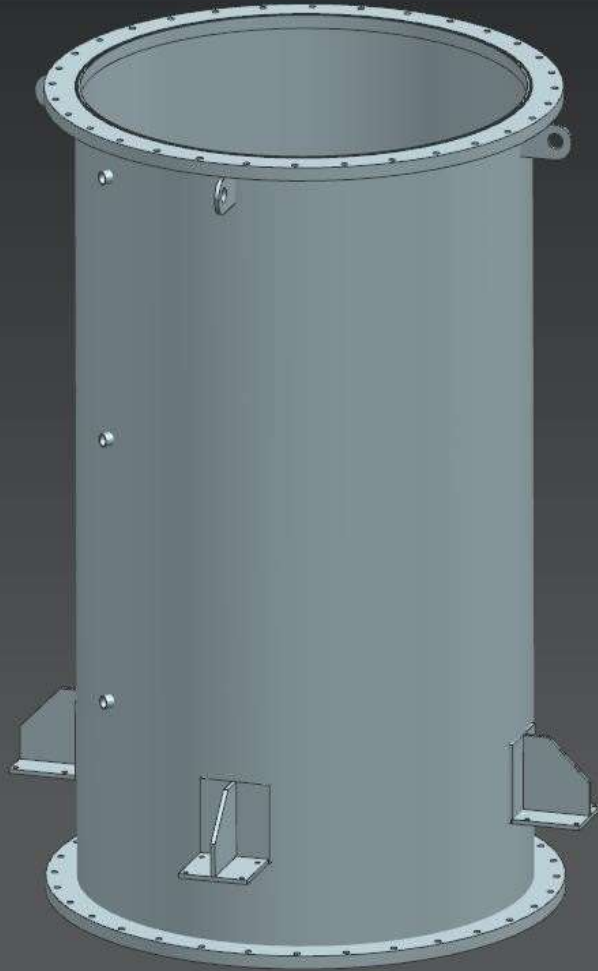
Flange



Toughened glass

All dimensions are in mm

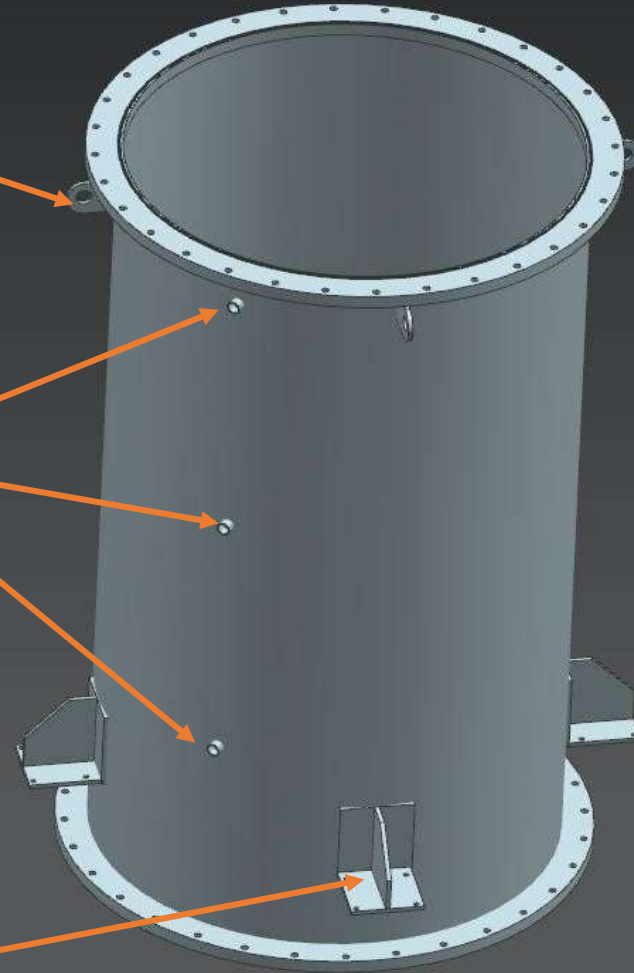
CYLINDRICAL PART (DOUBLE-WALLED)



Lifting hook

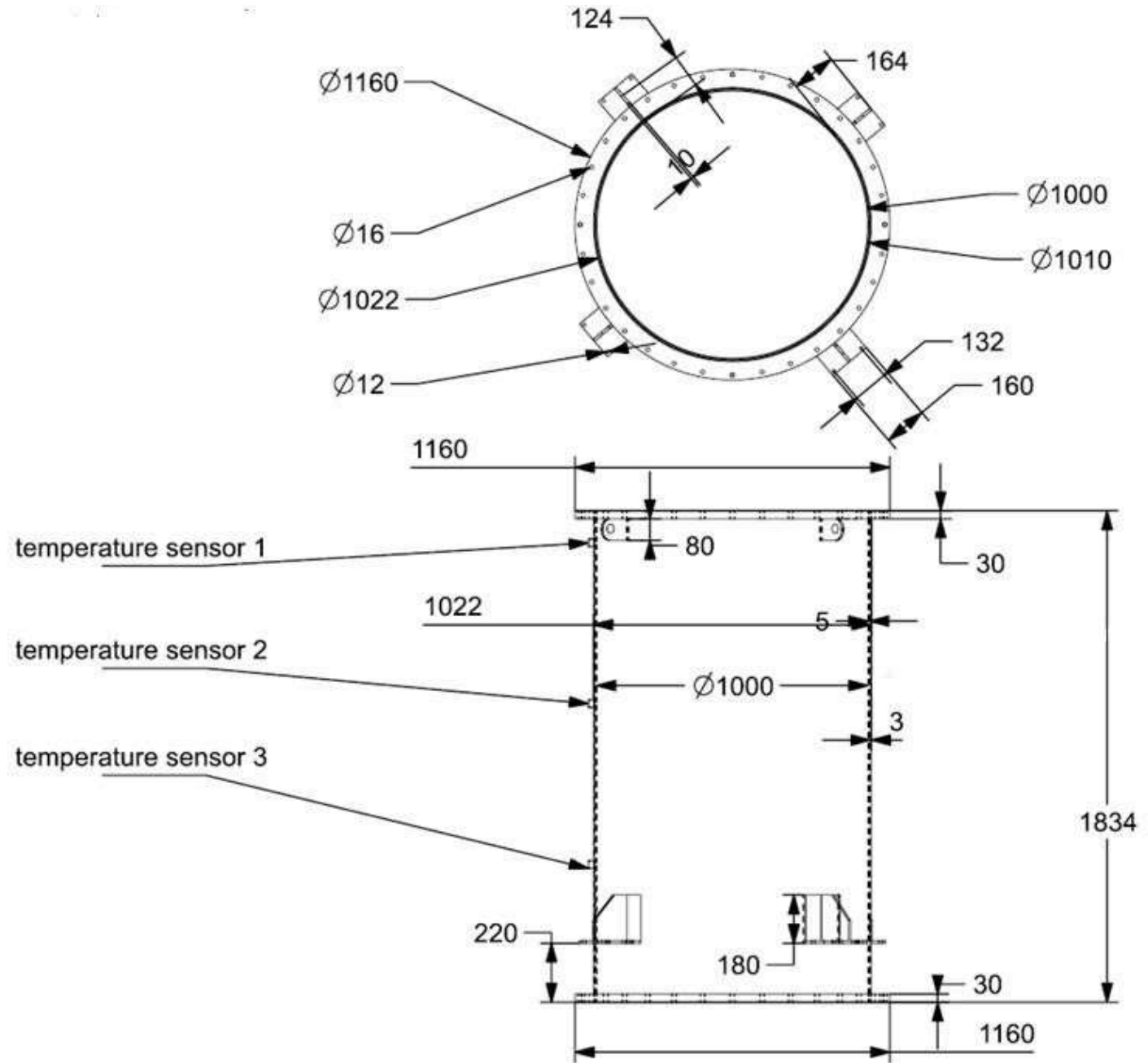
Ports for
temperature
sensors

Support flange
(To connect
support legs)



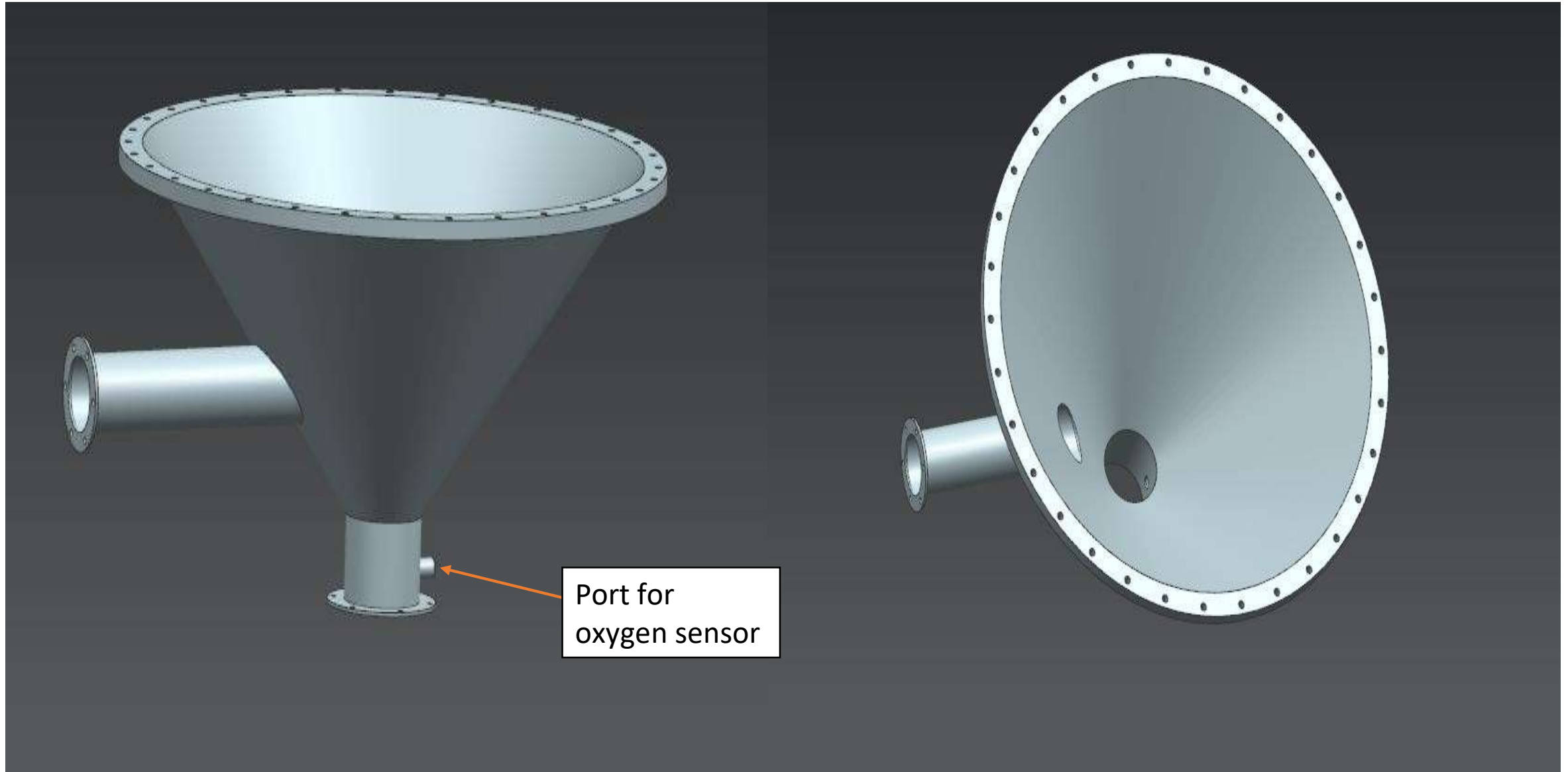
ENGINEERING DRAWING OF CYLINDRICAL PART

- Cylindrical portion should be double walled with 5 mm and 3 mm thickness of inner and outer wall respectively.
- Provision for water jacket with appropriate inlet and outlet for cooling water.

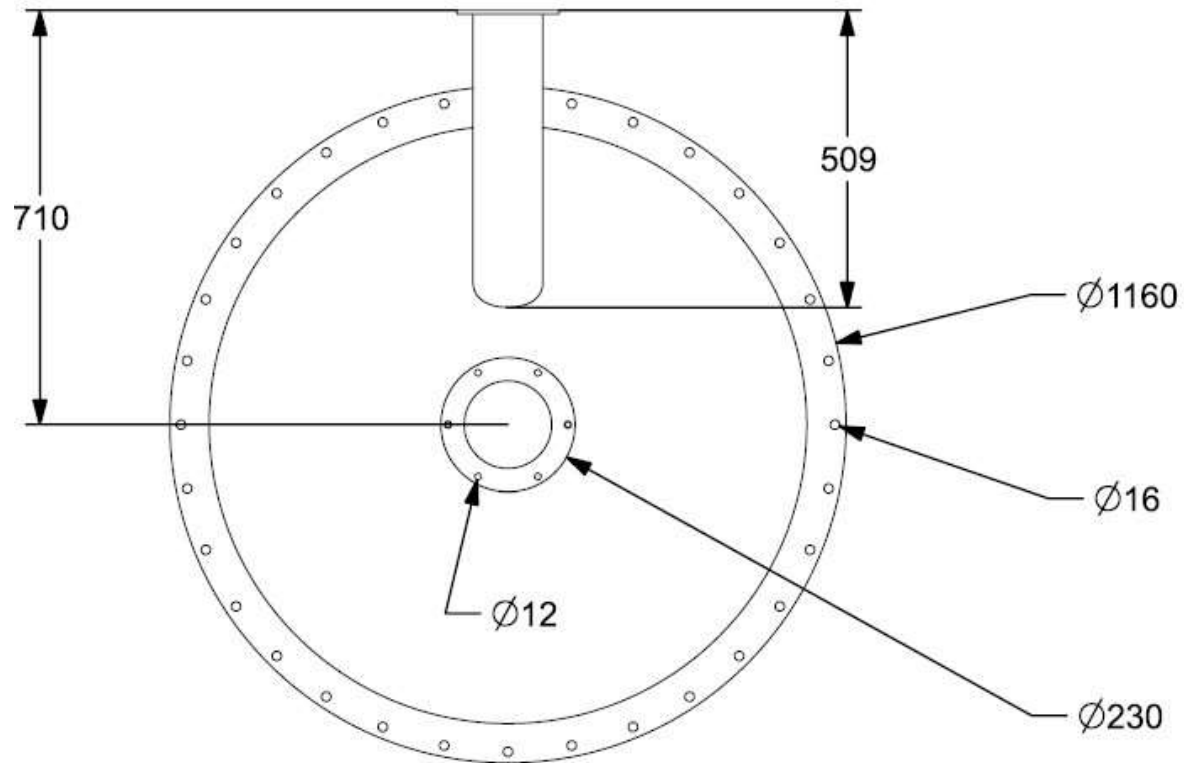
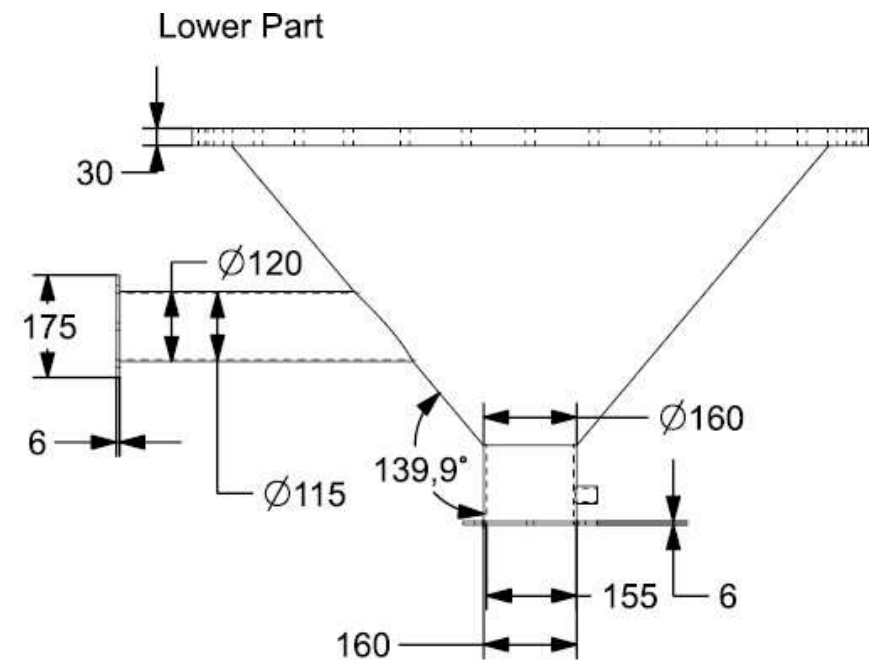
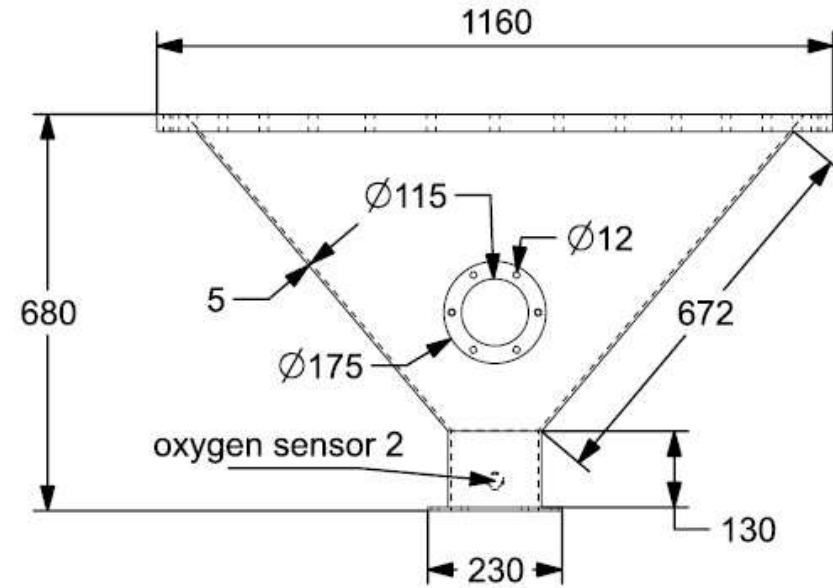


All dimensions are in mm

LOWER PART

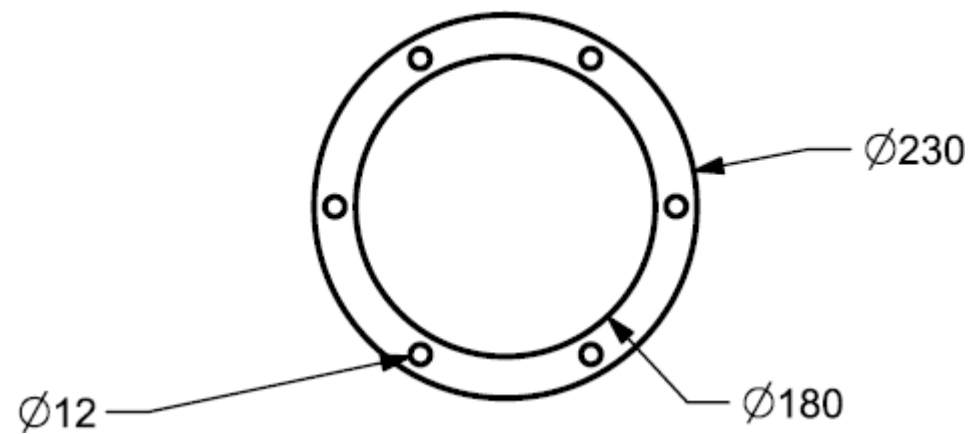
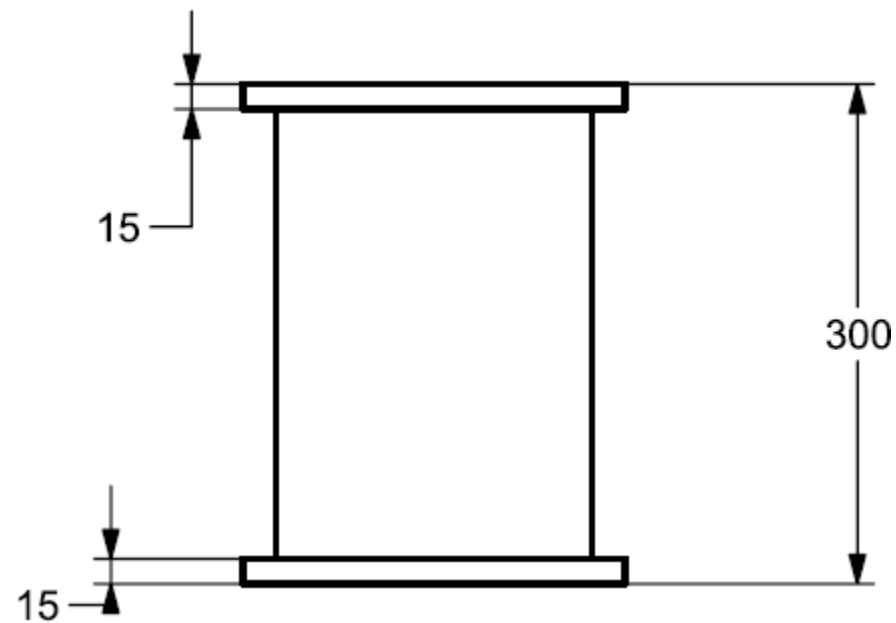
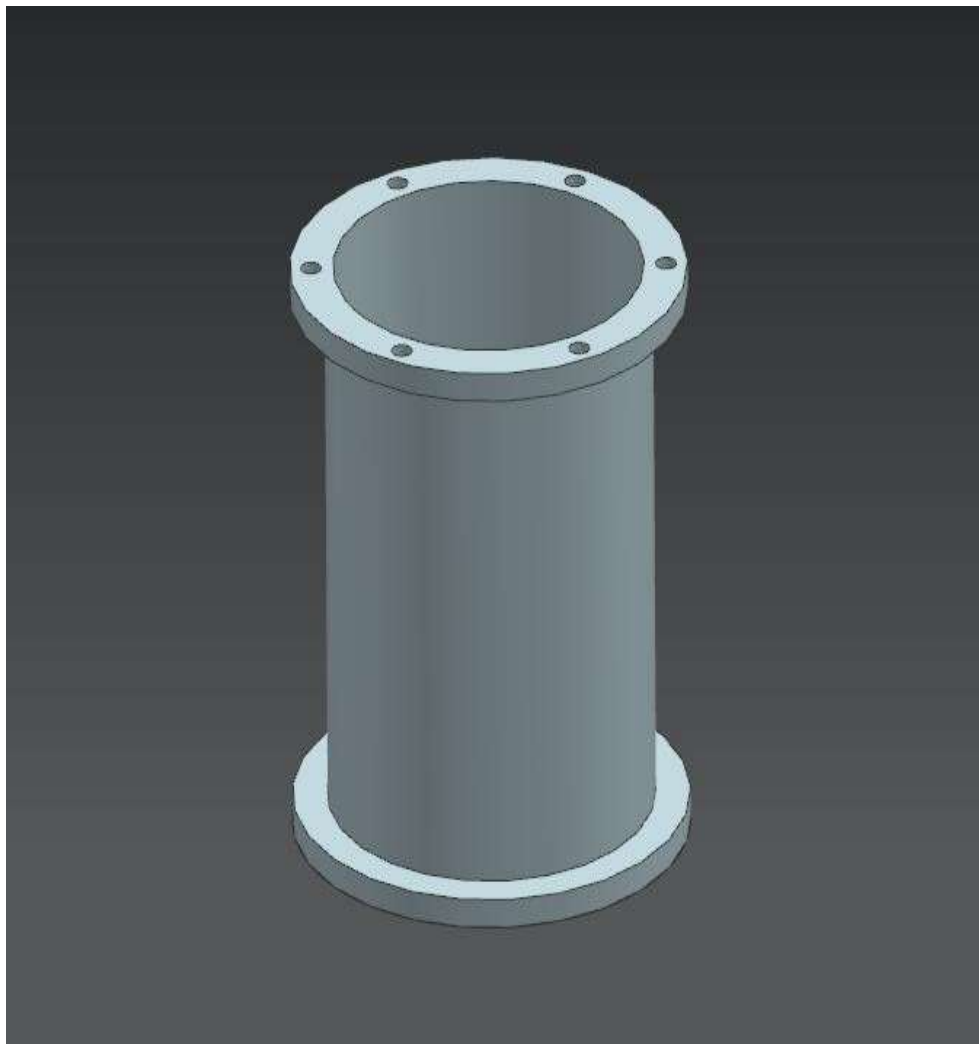


ENGINEERING
DRAWING OF
LOWER PART



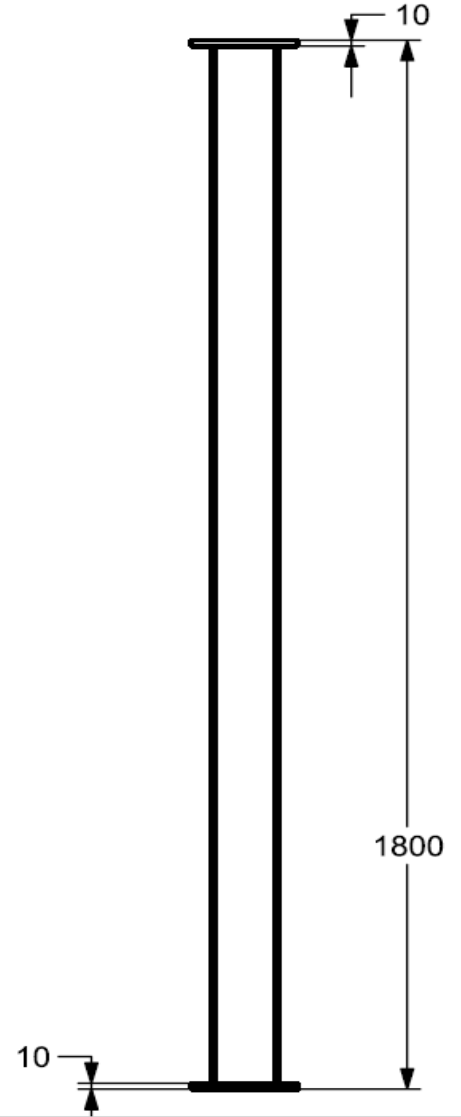
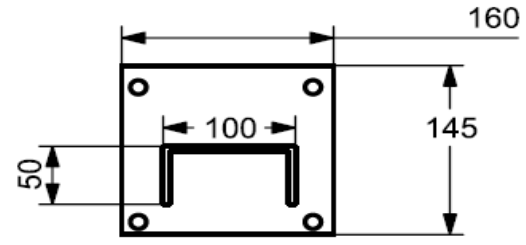
All dimensions are in mm

POWDER COLLECTOR



All dimensions are in mm

SUPPORT LEG (4 no.)



All dimensions are in mm