

CORRIGENDUM 2

“SUPPLY, INSTALLATION AND COMMISSIONING OF AUDIO AND VIDEO CONFERENCE SYSTEM FOR SMART CLASSROOM of IIT MADRAS AS PER DESIGN.

Tender: CE/RAVI/103/2023/SMARTCLASSAV

1. **EXTENSION OF BID SUBMISSION DATE**: The due date for the submission of bids has been extended to 22/05/2023 @ 3 PM. The bid opening is 23/05/2023 @ 3 PM.
2. In Page No. 6 - Public Procurement – Preference to Make in India Make in India Clause (20%) applicable for the overall BoM.
3. In Page No.12 – Bill of Material – Sr# 18 and
In Page No.24 – Detailed Technical Specification – Sr# 18 may be read as

Sr#	Description	Make	UoM	Qty
18	Ceiling Tile Microphone	SENNHEISER / SHURE	Nos.	4

4. In Page No. 7, 11, 38 - Bidder Eligibility Criteria II – Pre-Qualification Criteria
(2) / (2.2) Submission of OEM certificate for Sr# 7 not needed.
(3) / (2.3) The bidder should have executed 3 similar works in the last 3 years (2020, 2021 and 2022) in Govt. Institutions/any of Central PSU's / any of central Government/ autonomous bodies/reputed firms and out of which, should have executed at least 1 work in Chennai. IIT Madras reserves its right to verify the claims submitted by the bidder and the feedback from the previous customers will be part of technical evaluation.
(4) / (2.4) The bidder shall have an annual financial turnover of not less than Rs. 2 Crores (Rupees two Crores only) during any two of the last three financial years.
(5) / (2.5) The bidder must have an operational service support office registered in Chennai as well as an established AV technical team. A description of the facility, its location, and the contact details for the support manager must be included with the technical bid.
5. In Page No. 14, 15, 16 – Detailed Technical Specification – Sr# 1, 2, 3 – 98” & 85” UHD Display – Power – Power Consumption and BTU may be read as.
 - For Sr#1 – 98” – Power Consumption: 600 Max [W/h] and BTU: 2050 Max
 - For Sr# 2&3 – 85” – Power Consumption: 450 Max [W/h] and BTU: 1540 Max
6. In Page No. 14 – Detailed Technical Specifications – Sr#1 – 98” UHD Display – Panel – Response Time (G-to-G) may be read as.
 - Response Time (G-to-G) – 8ms (Typ.) Max
7. In Page No. 27 – Detailed Technical Specifications – Sr#27 – AV Controller – Minimum Performance Parameters – Regulatory compliance & Temperature/humidity may be read as

- Regulatory compliance – CE
 - Temperature/humidity - Operating Temp: +32 to +104 °F or better
8. In Page No. 24 – Detailed Technical Specifications – Sr#18 - Ceiling Tile Microphone with voice lift – Minimum Performance Parameters may be read as
- Connections and Operating Elements:
 - Dante : Dante™ interface with two RJ 45 or similar sockets
 - Analog Out : 3-pin terminal for analog audio out or equivalent or support analog out from the audio digital signal processor
 - Specifications:
 - The microphone array shall consist of minimum 28 microphone capsules and shall use beamforming technology that automatically focuses on whoever is speaking in the class room
 - ⊖ The beam will automatically detect the position of the person speaking and will follow the person around the class room
 - A threshold or Sensitivity for the detection shall be adjustable
 - Live monitoring of the talker position shall be available in the software
 - ⊖ The microphone array shall have a Dante™ interface with RJ 45 for digital audio output
 - ⊖ The microphone array shall also feature to support analogue audio output either directly or through digital signal processor
 - ⊖ In addition, the microphone array shall support control and monitoring using the control software
9. In Page No. 26 – Detailed Technical Specifications – Sr# 21,22, 23 – Software Licenses for DSP – may read as
- All necessary licenses to be included for DSP configurations to enable voice lift applications wherever it's needed.
10. **ANNEXURE –2 (DRAWING)**_In Page No. 35, 36 Annexure -2 may read as– Bidder needs to provide the respective drawings for Microphone coverage and Speaker placement.
- **Microphone Coverage Drawing:**
The bidder needs to submit the microphone coverage drawing in pdf format with the needed quantity of microphones to enable voice lift solution for the smart class layout. The drawing needs to be certified by the appropriate OEM on their provided letterhead with the seal and signature of the OEM technical representative. The technical bid proposal needs to include this certified drawing.
 - **Speaker Placement Drawing:**
The bidder needs to submit the speaker's coverage drawing in pdf format with the needed quantity of speakers to enable voice lift solution for the smart class layout. The drawing needs to be certified by the appropriate OEM on their provided

letterhead with the seal and signature of the OEM technical representative. The technical bid proposal needs to include this certified drawing.

General Queries: -

#Query 1- Provision to include “equivalent make” against the given make.

Reply – We can’t give equivalent/suitable make matching terminology, instead if you have given make and specification matches exactly to the tender specification; the committee will review it in the technical specification and decide the eligibility. IITM reserves the right to select or reject the equivalent model quoted based on the requirements of this tender.

#Query 2 – Provision to include Crestron Make

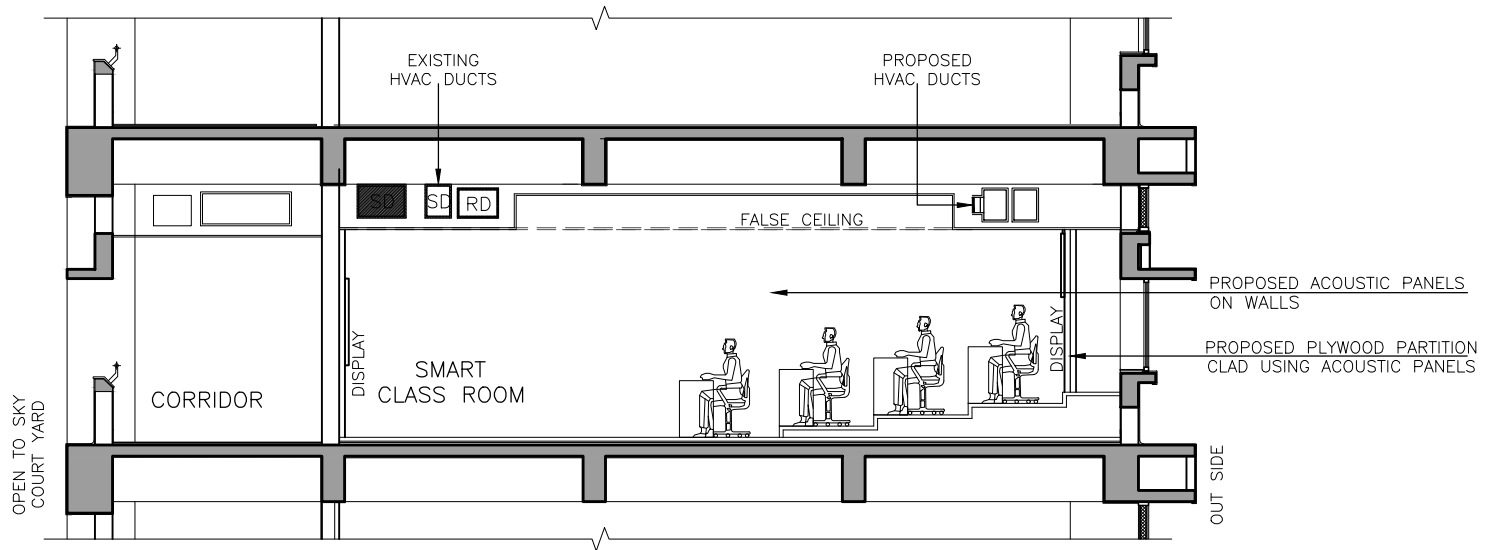
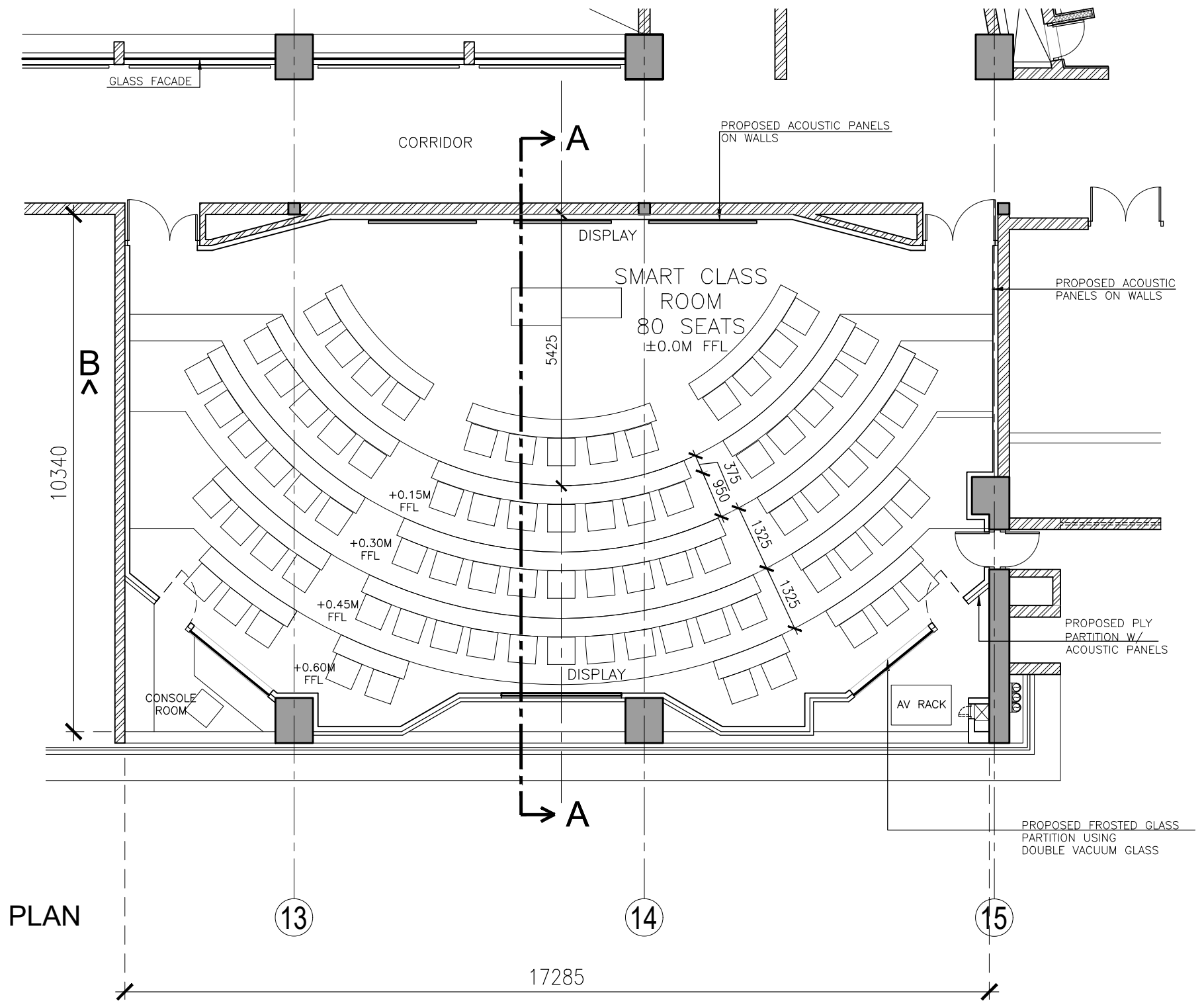
Reply – Crestron make will be one of the approved brand, and it may be quoted wherever the specifications exactly meet with the tender specifications.

#Query 3 – Drawings of Smart class is enclosed as a separate annexure along with this corrigendum.

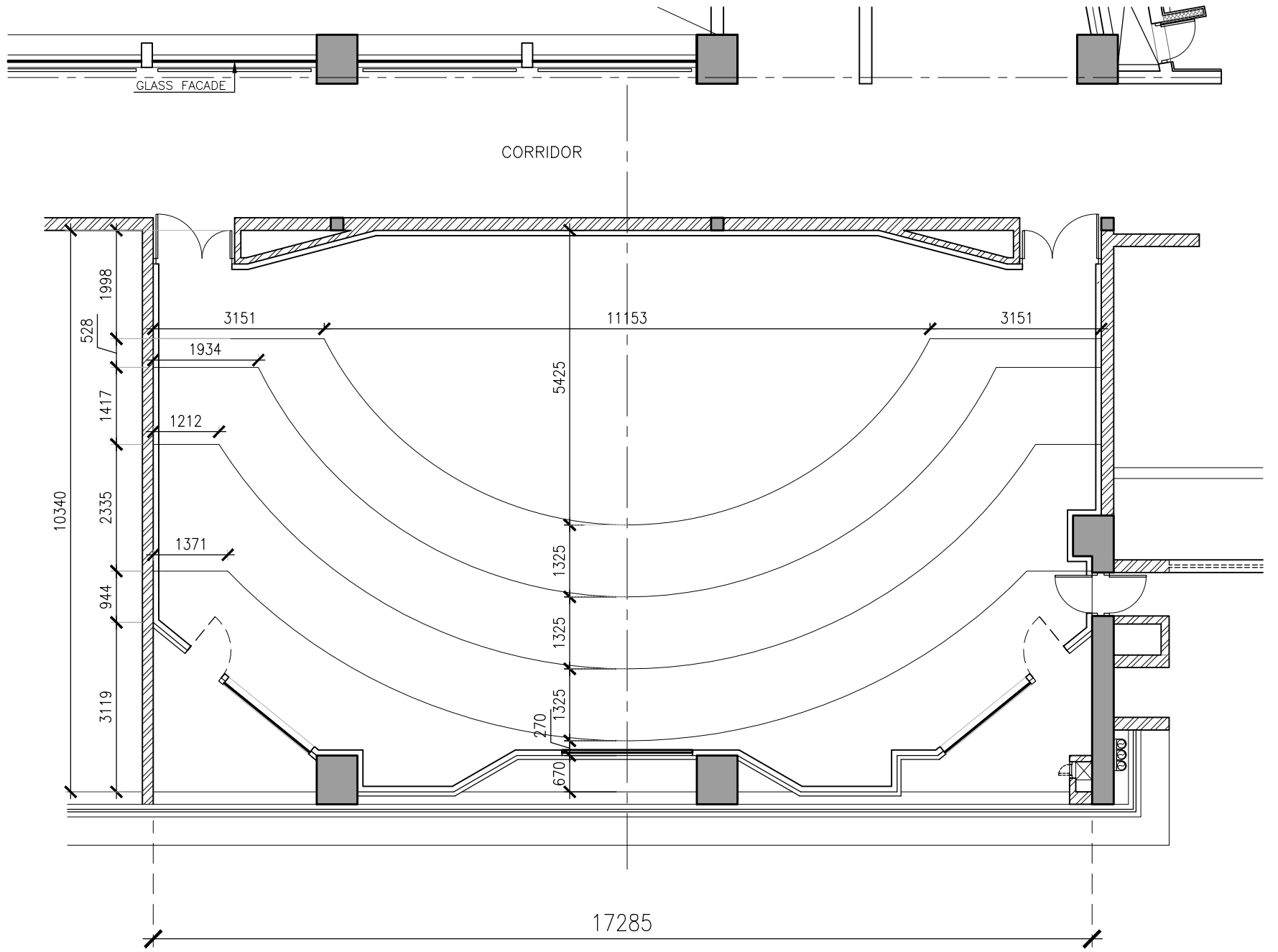
All other conditions remain unchanged.

NOTE: Further request if any received from the bidders for an amendment will not be considered.

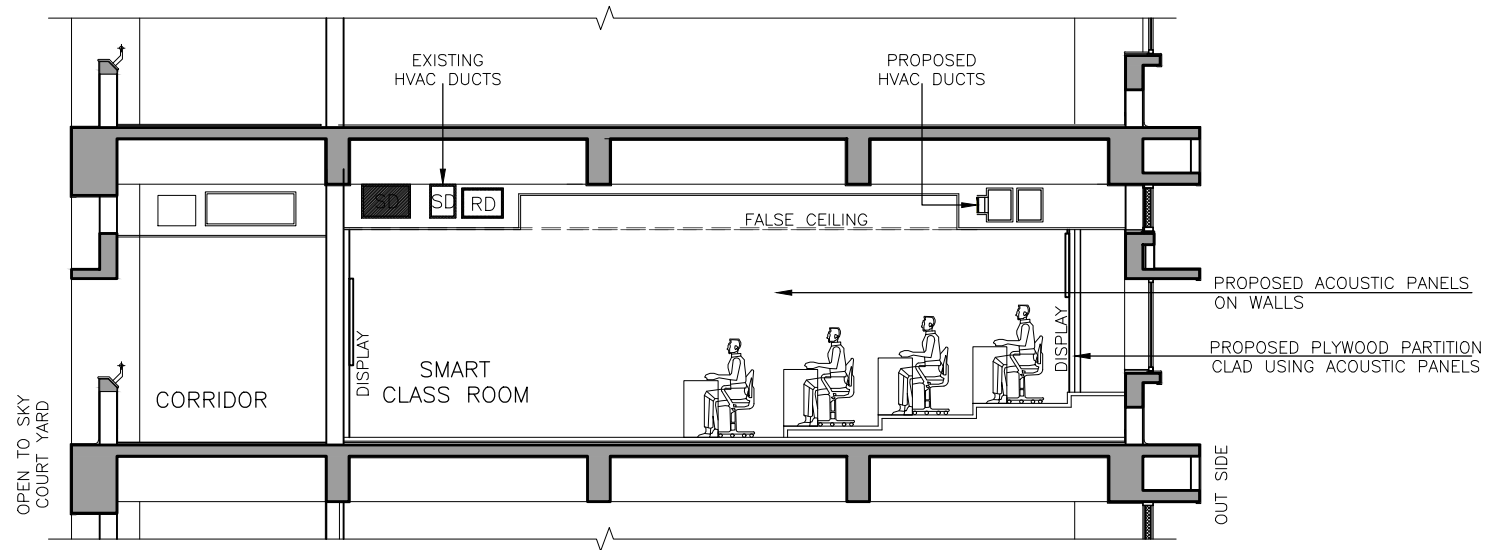
Annexure Drawings



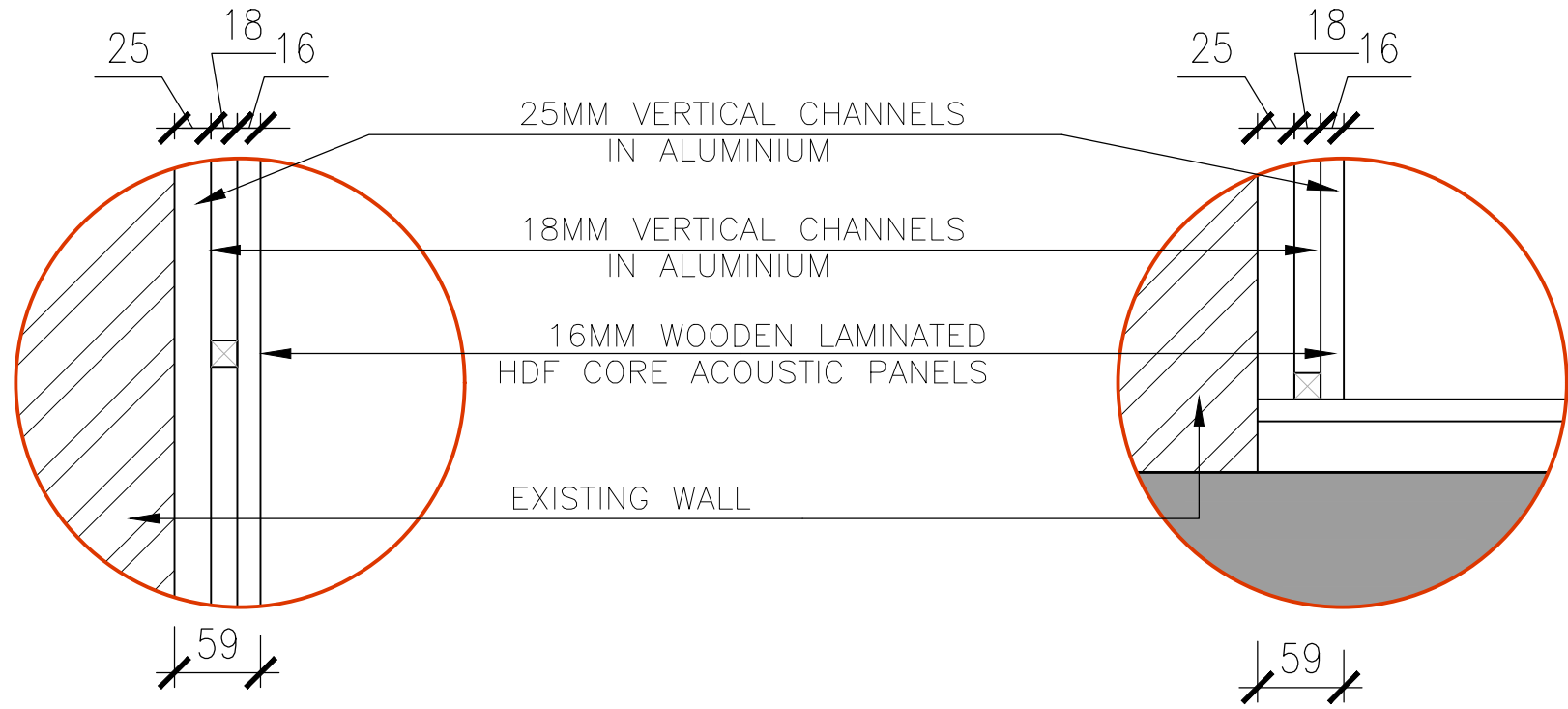
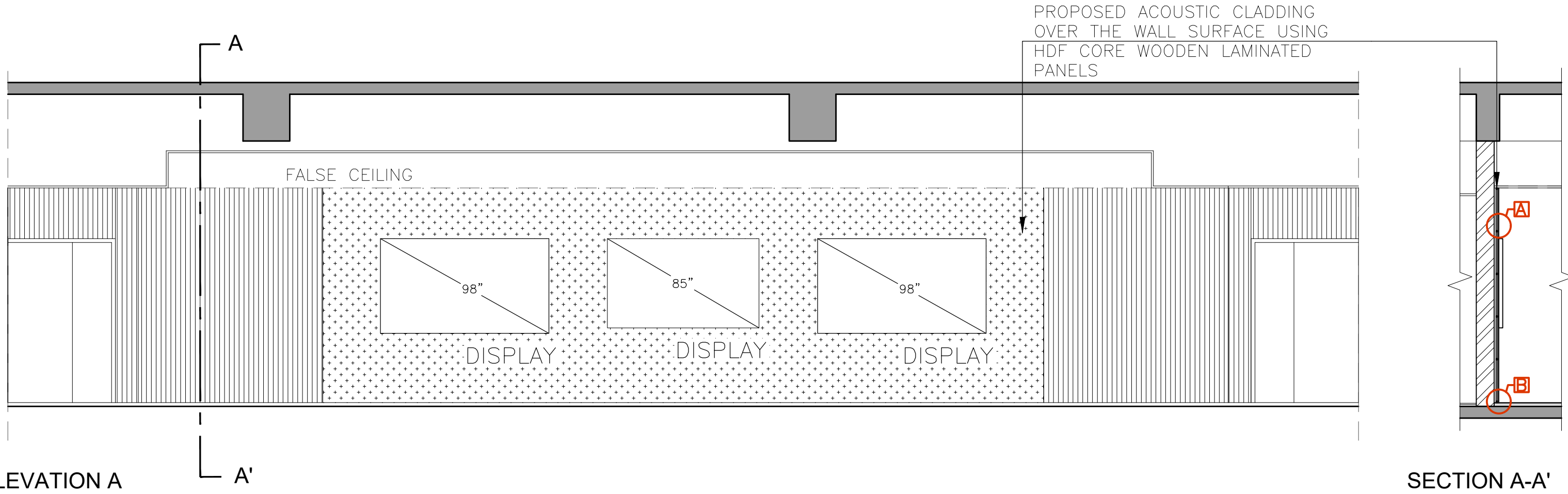
SECTION 'A-A'



FLOORING LAYOUT

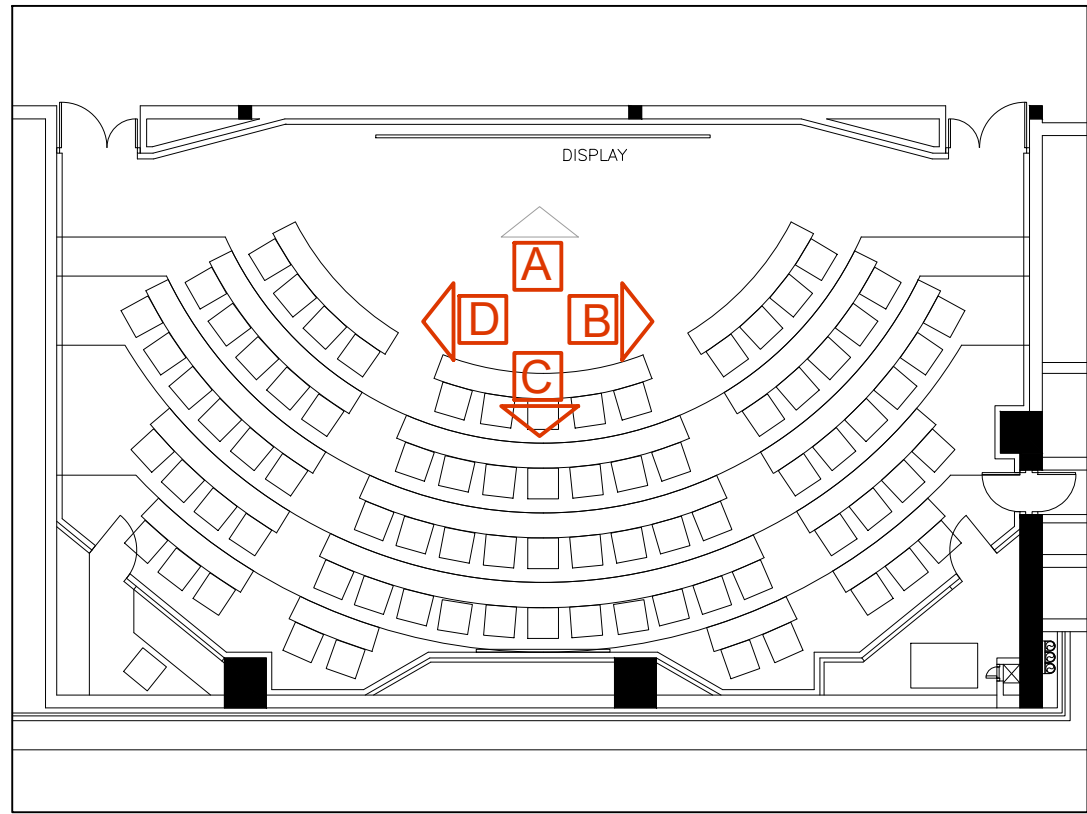


SECTION 'A-A'

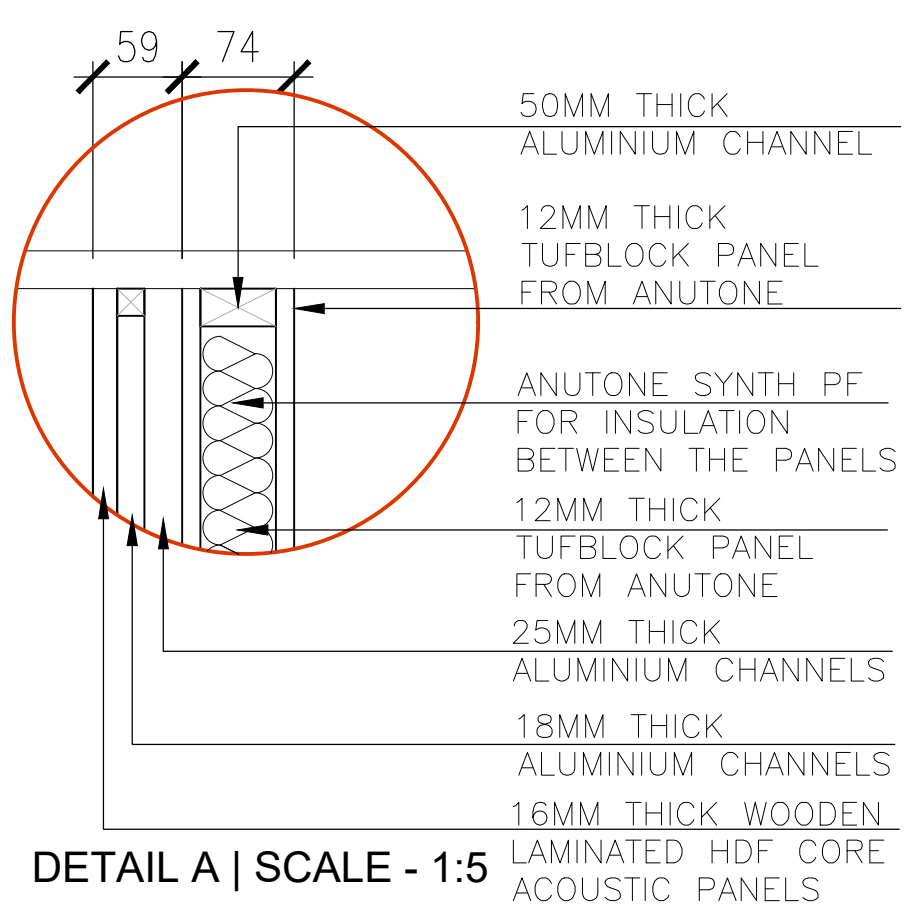
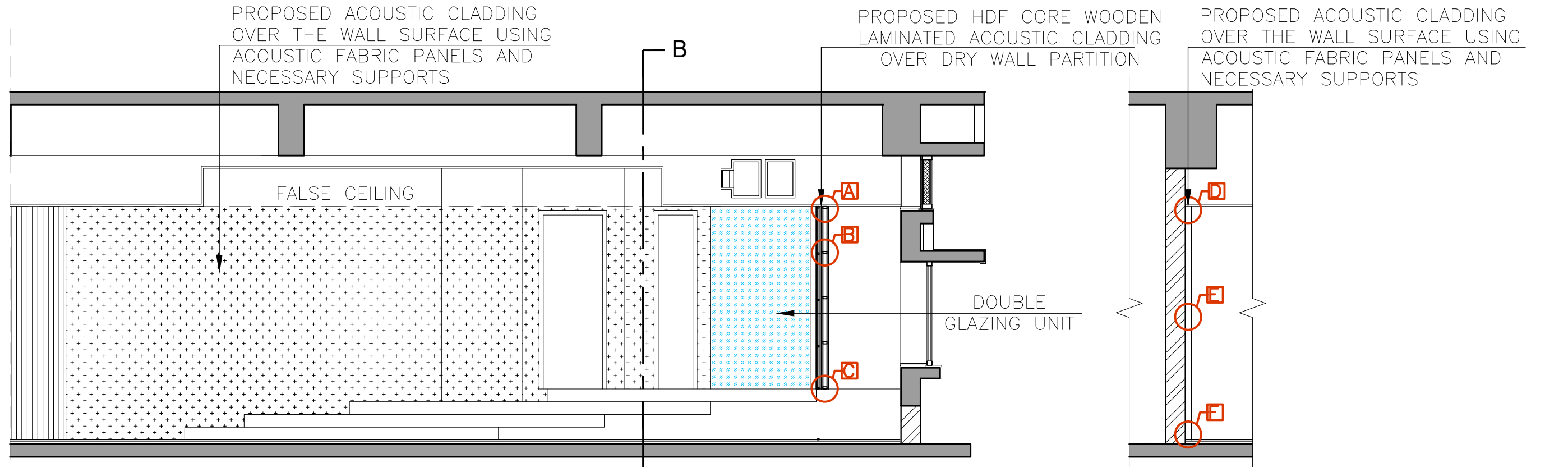


DETAIL A | SCALE - 1:5
HDF CORE WOODEN ACOUSTIC PANELS OVER EXISTING WALL

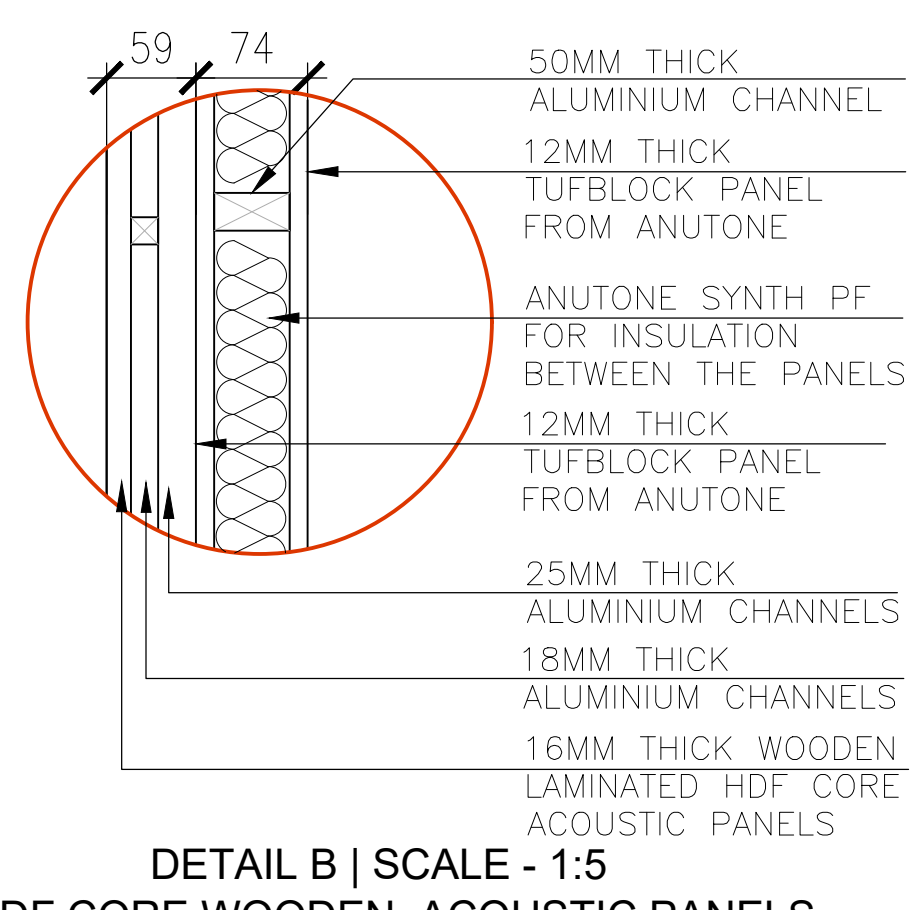
DETAIL B | SCALE - 1:5
HDF CORE WOODEN ACOUSTIC PANELS OVER EXISTING WALL



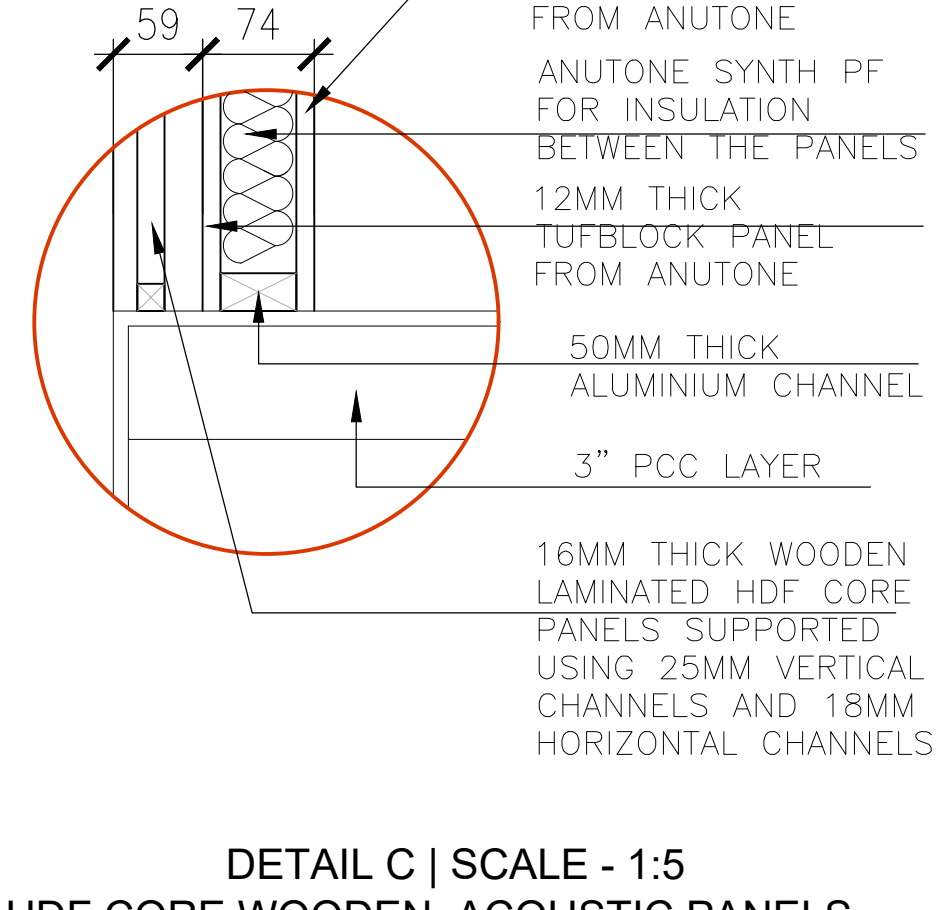
KEY PLAN



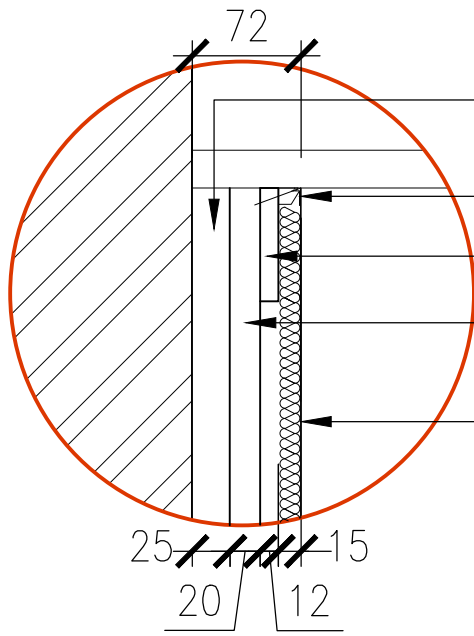
DETAIL A | SCALE - 1:5
HDF CORE WOODEN ACOUSTIC PANELS OVER DRY WALL PARTITION



DETAIL B | SCALE - 1:5
HDF CORE WOODEN ACOUSTIC PANELS OVER DRY WALL PARTITION

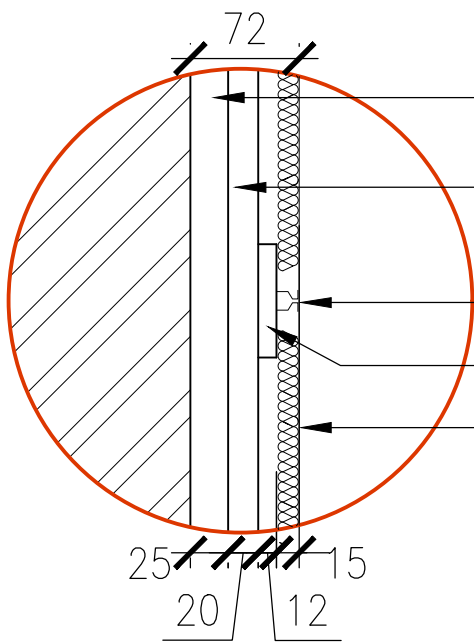


DETAIL C | SCALE - 1:5
HDF CORE WOODEN ACOUSTIC PANELS OVER DRY WALL PARTITION



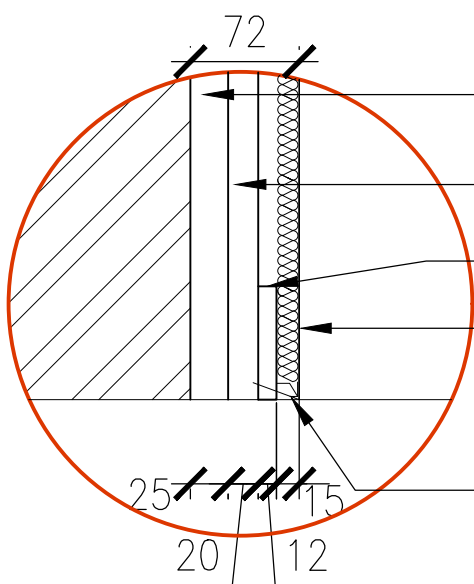
- 25MM GI CHANNELS
OVER EXISTING WALL
- 15MM GRIPPER CHANNELS
- 12MM PLY SUPPORT
- 20MM THICK
ANUTONE STRAND
- ACOUSTIC FABRIC COVERING
HELD BY GRIPPERS WITH
ANUTONE SYNTH PF FOR
SOUND INSULATION INSIDE

DETAIL D | SCALE 1:5
ACOUSTIC FABRIC PANELS
OVER EXISTING WALL



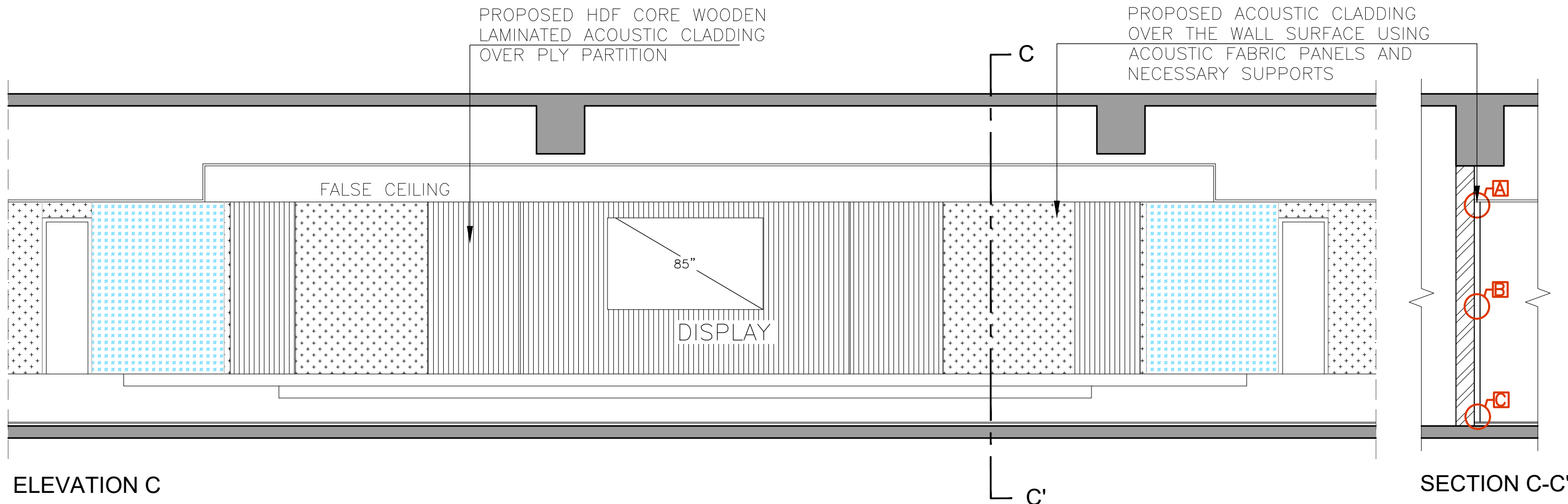
- 25MM GI CHANNELS
OVER EXISTING WALL
- 20MM THICK
ANUTONE STRAND
- 15MM GRIPPER CHANNELS
- 12MM PLY SUPPORT
- ACOUSTIC FABRIC COVERING
HELD BY GRIPPERS WITH
ANUTONE SYNTH PF FOR
SOUND INSULATION INSIDE

DETAIL E | SCALE 1:5
ACOUSTIC FABRIC PANELS
OVER EXISTING WALL



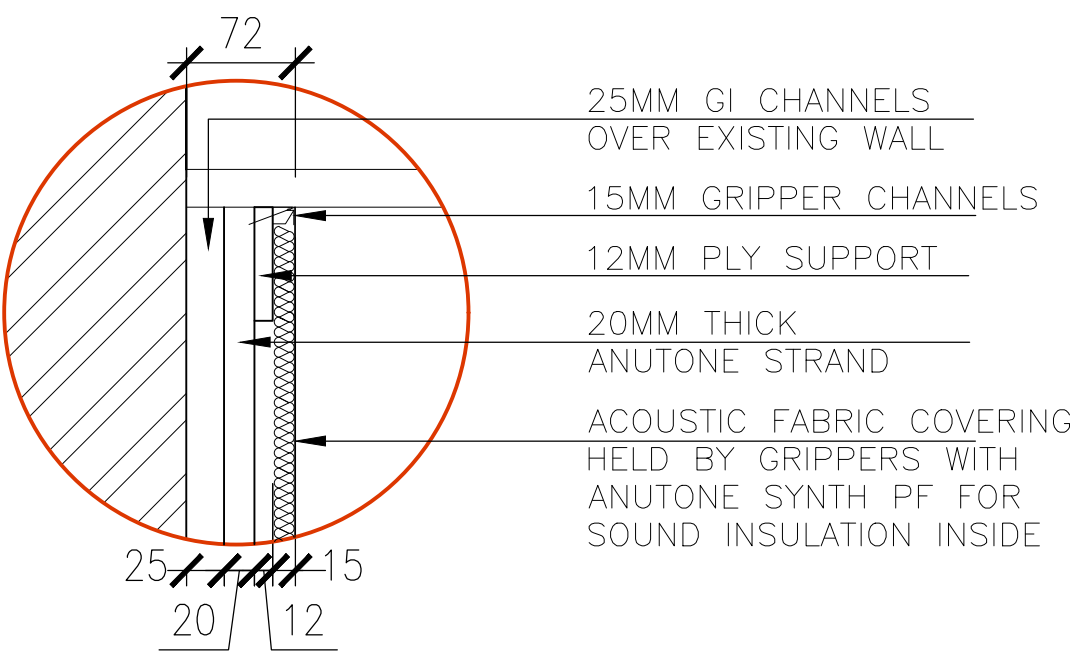
- 25MM GI CHANNELS
OVER EXISTING WALL
- 20MM THICK
ANUTONE STRAND
- 12MM PLY SUPPORT
- ACOUSTIC FABRIC COVERING
HELD BY GRIPPERS WITH
ANUTONE SYNTH PF FOR
SOUND INSULATION INSIDE
- 15MM GRIPPER CHANNELS

DETAIL F | SCALE 1:5
ACOUSTIC FABRIC PANELS
OVER EXISTING WALL

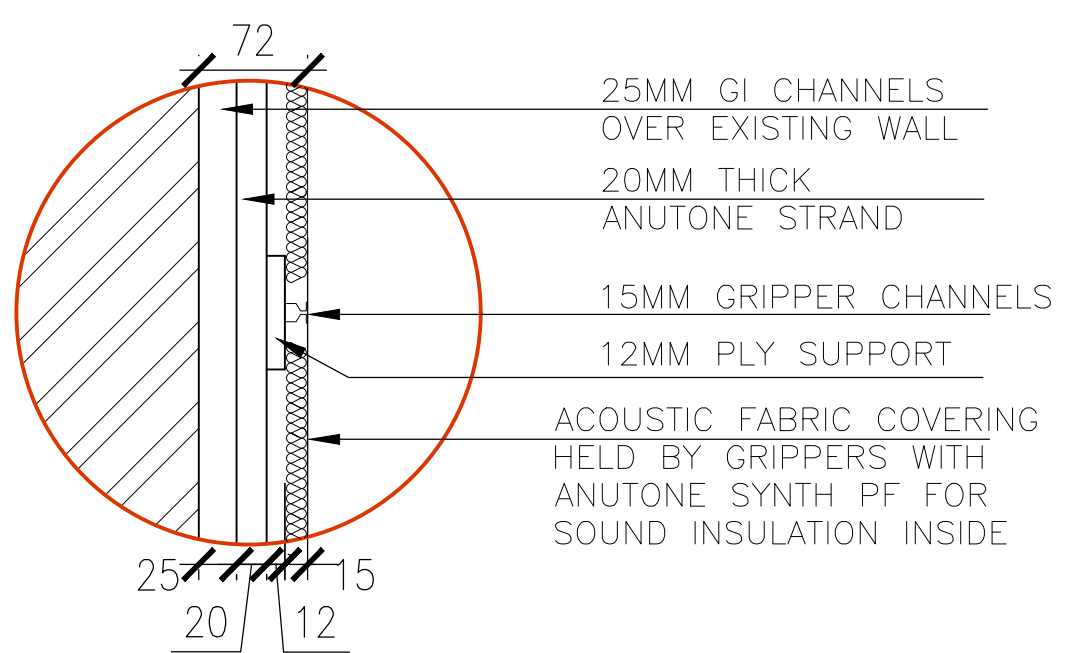


ELEVATION C

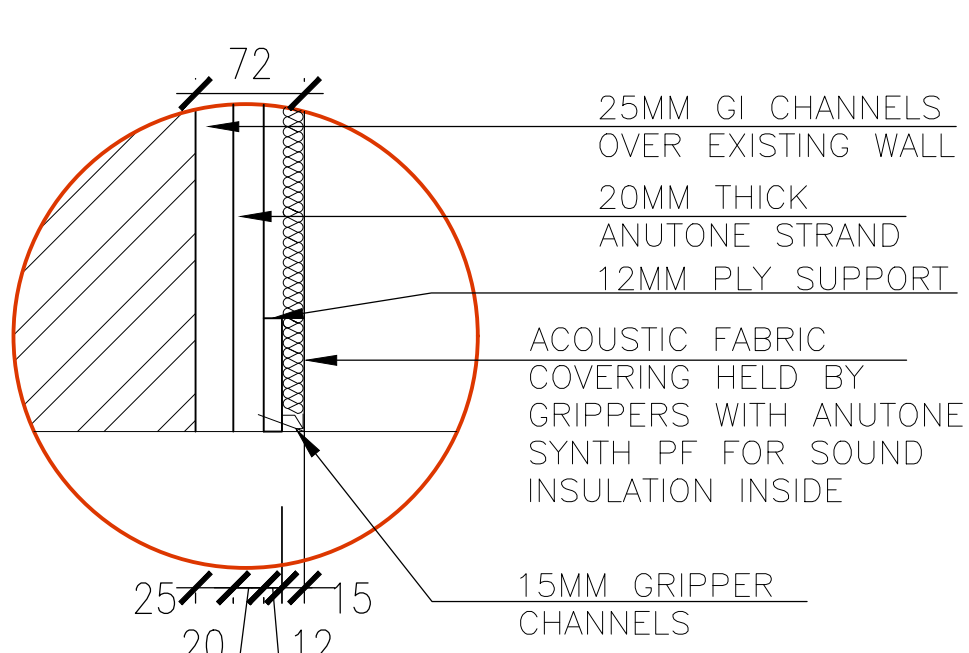
SECTION C-C'



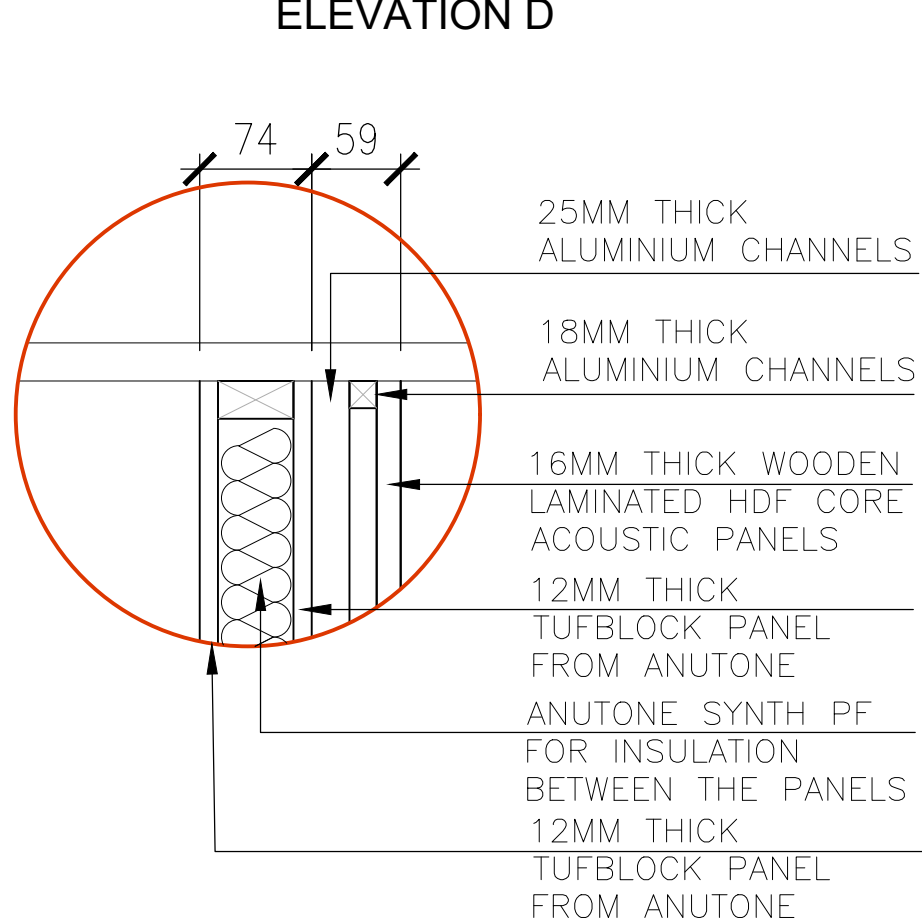
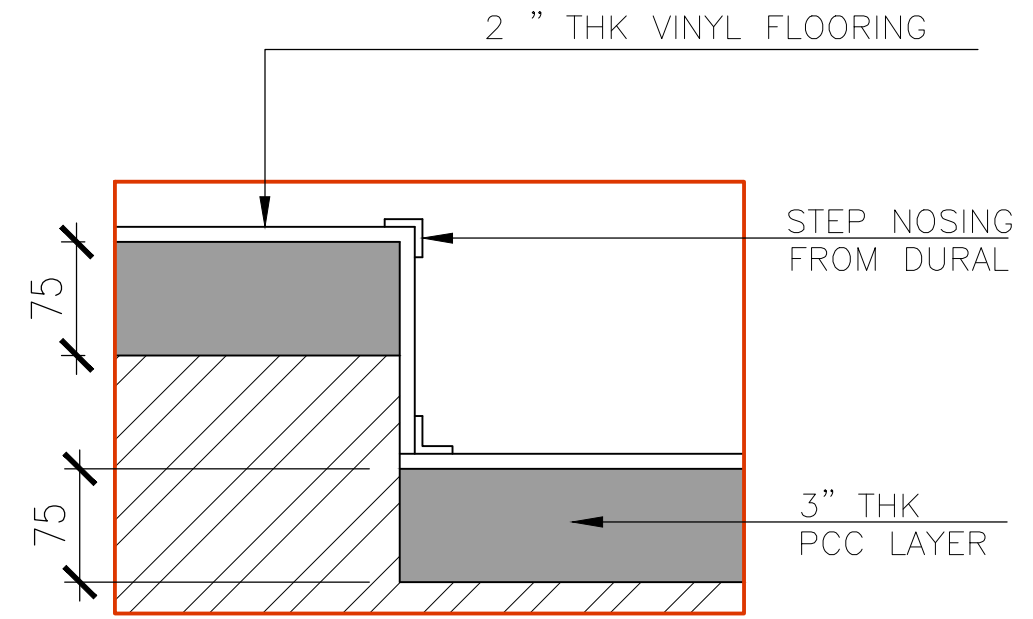
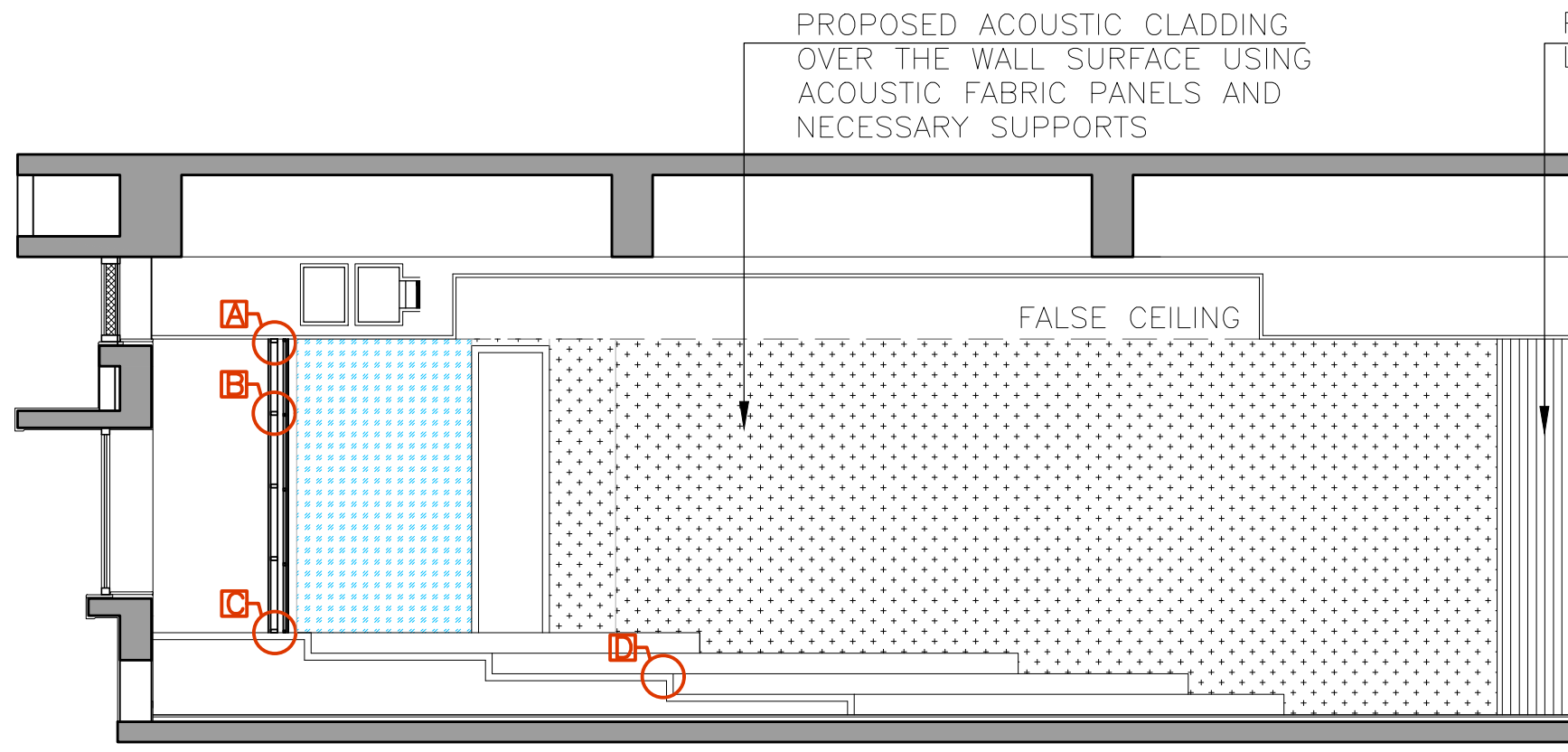
DETAIL A | SCALE 1:5
ACOUSTIC FABRIC PANELS
OVER EXISTING WALL



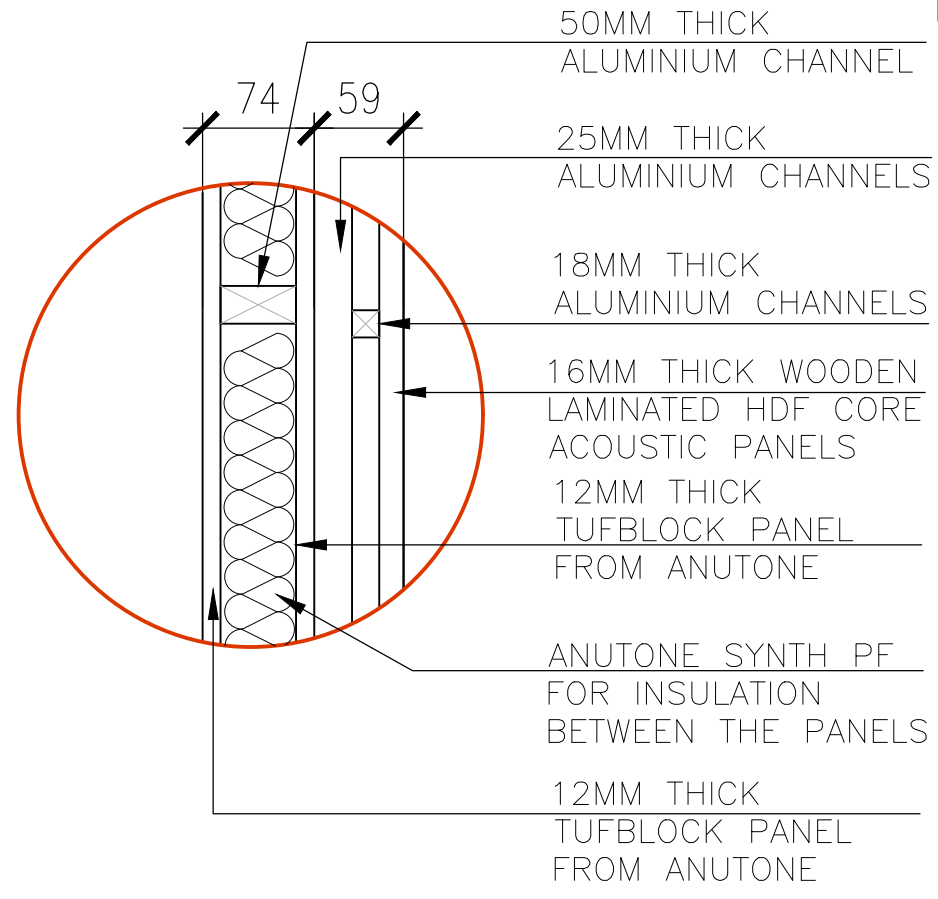
DETAIL B | SCALE 1:5
ACOUSTIC FABRIC PANELS
OVER EXISTING WALL



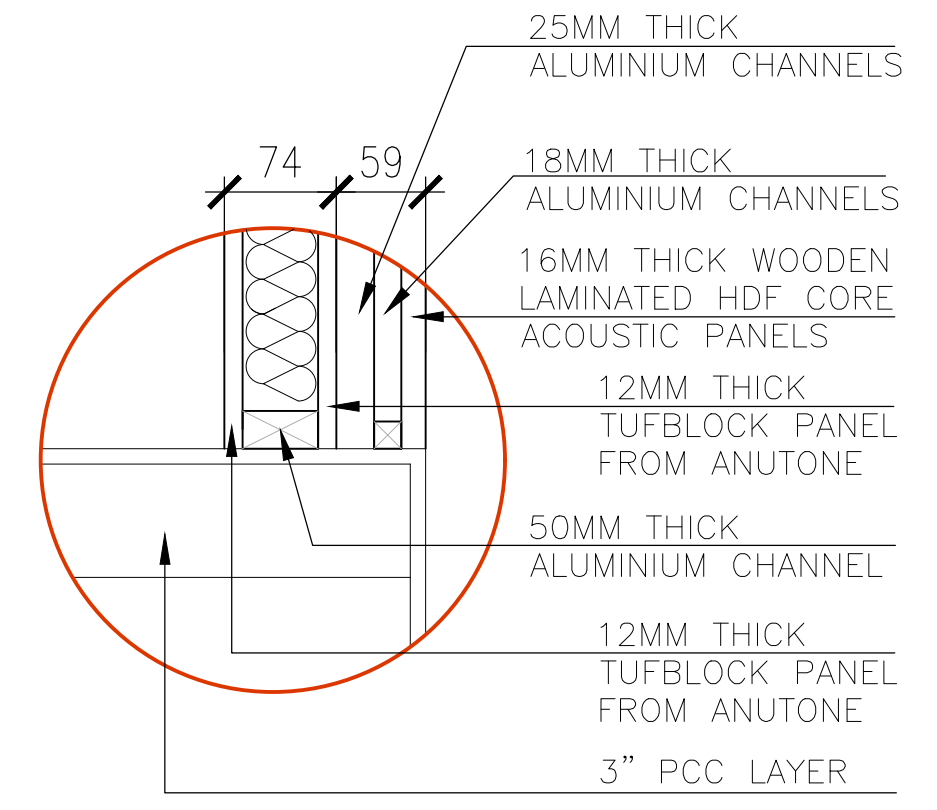
DETAIL C | SCALE 1:5
ACOUSTIC FABRIC PANELS
OVER EXISTING WALL



DETAIL A | SCALE 1:5
HDF CORE WOODEN ACOUSTIC PANELS OVER DRY WALL PARTITION



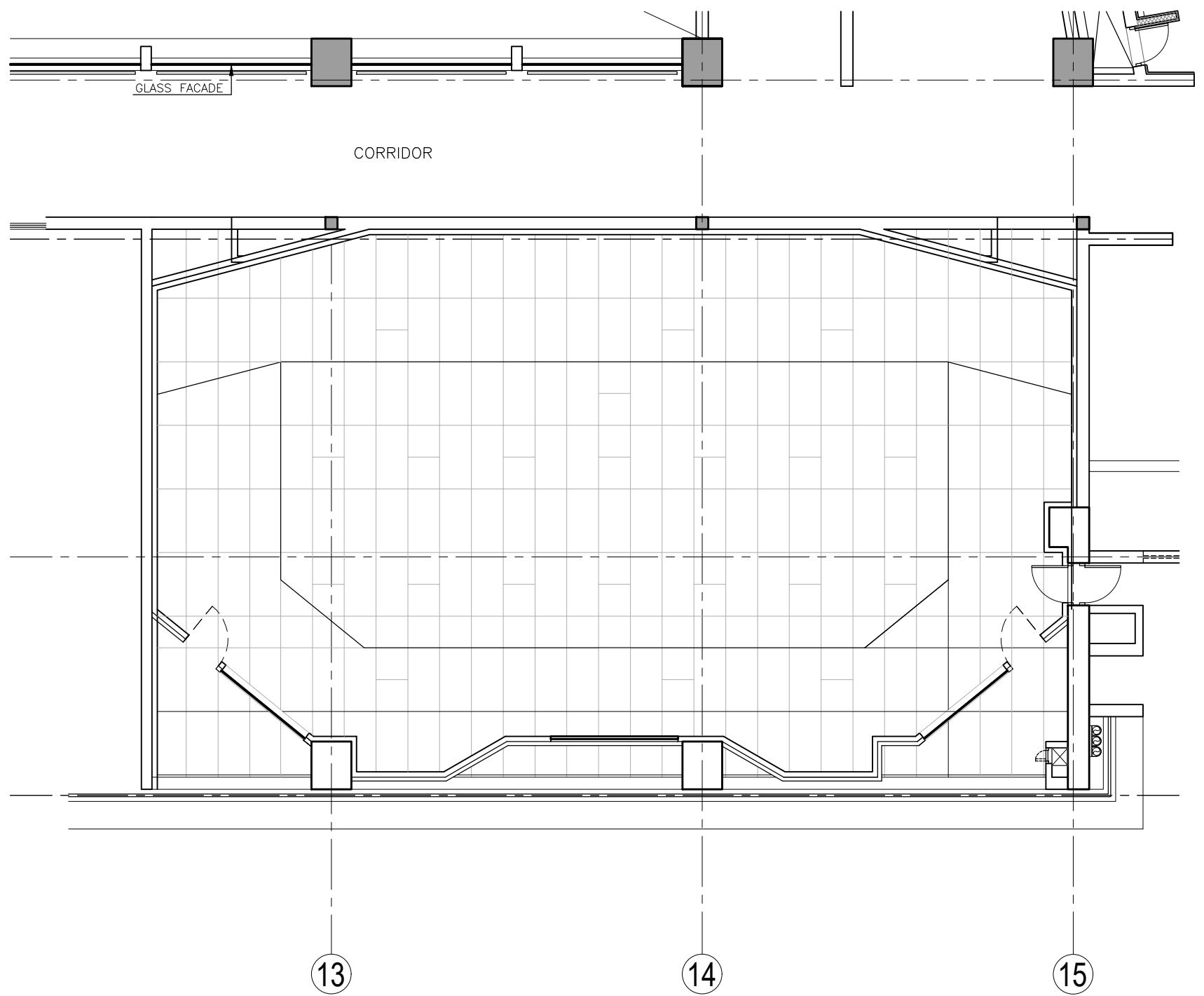
DETAIL B | SCALE 1:5
HDF CORE WOODEN ACOUSTIC PANELS OVER DRY WALL PARTITION



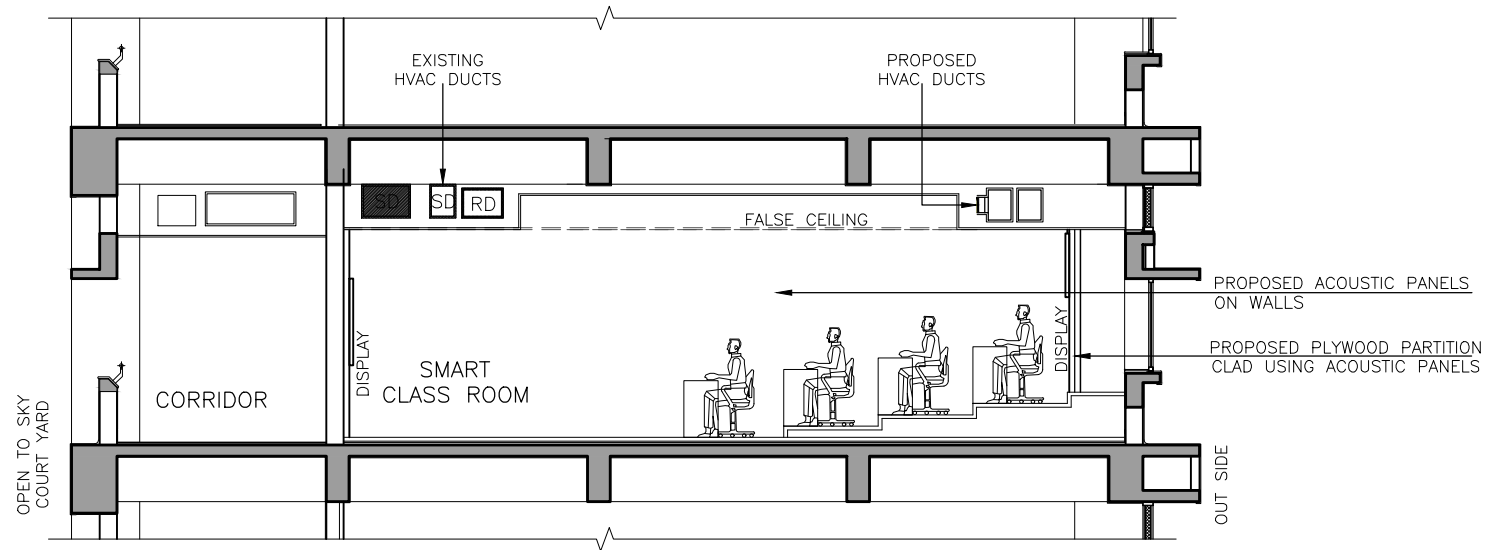
DETAIL C | SCALE 1:5
HDF CORE WOODEN ACOUSTIC PANELS OVER DRY WALL PARTITION



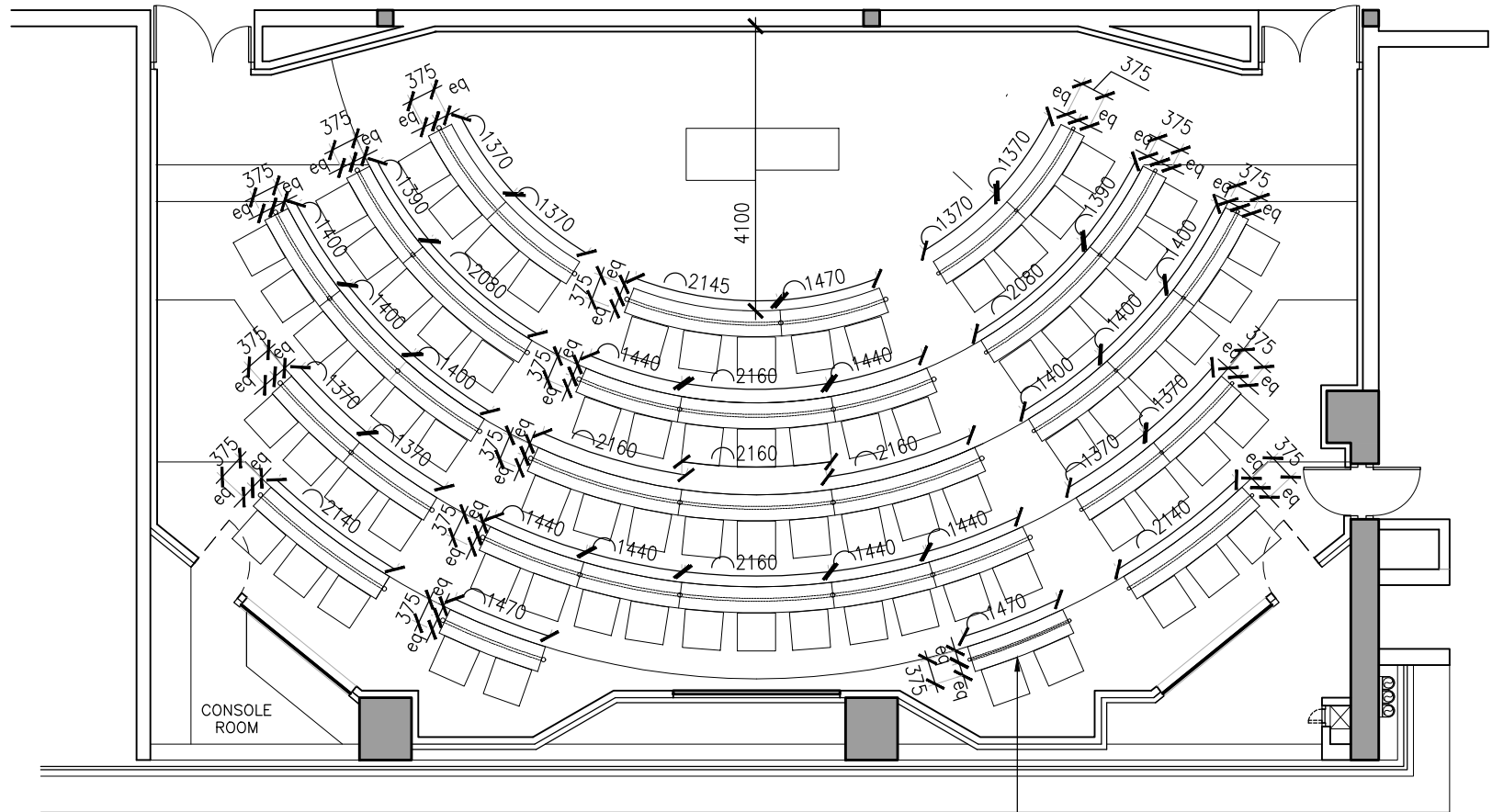
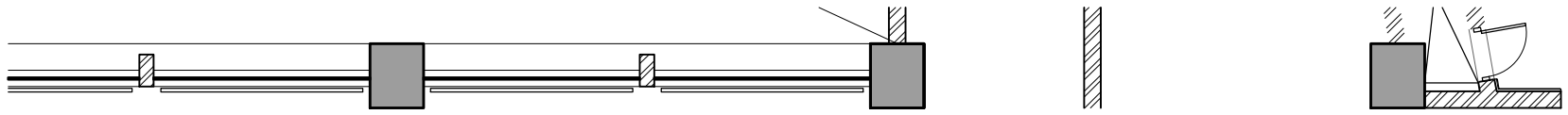
PERSPECTIVES SHOWING CLASSROOM INTERIOR | DRG 004



FALSE CEILING LAYOUT

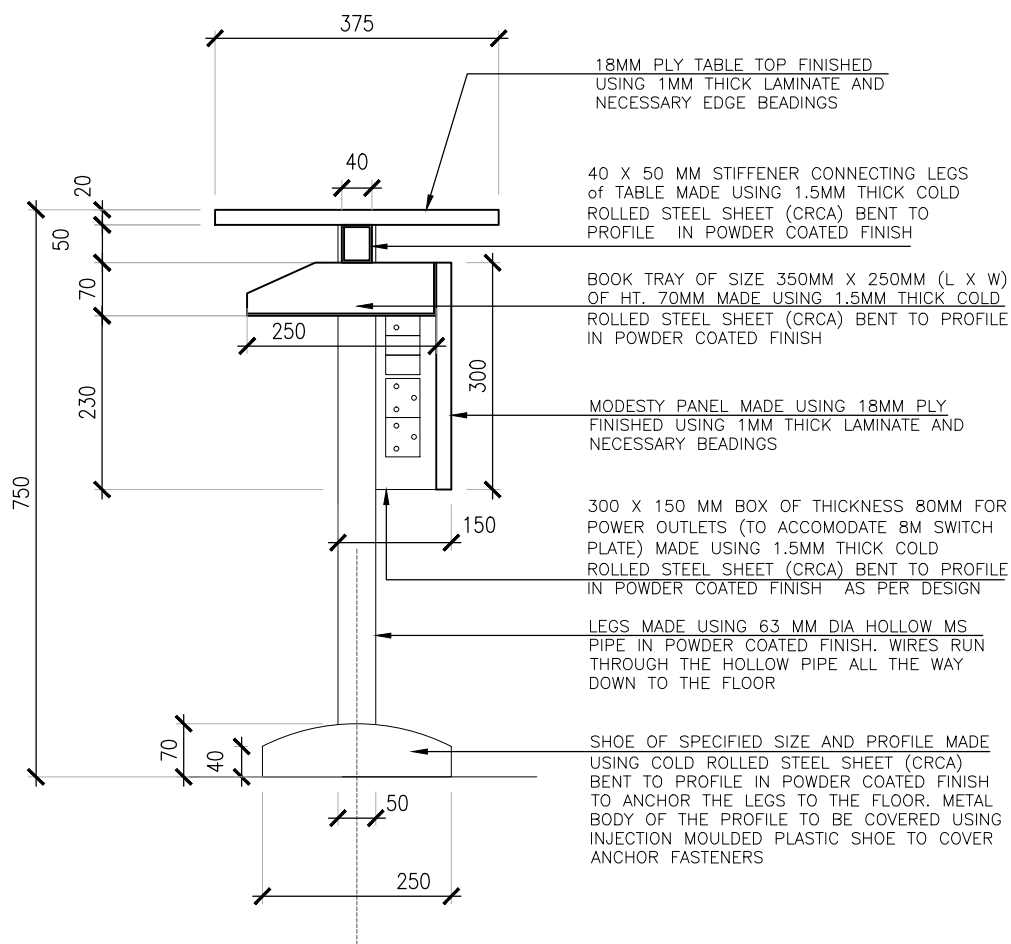


SECTION 'A-A'

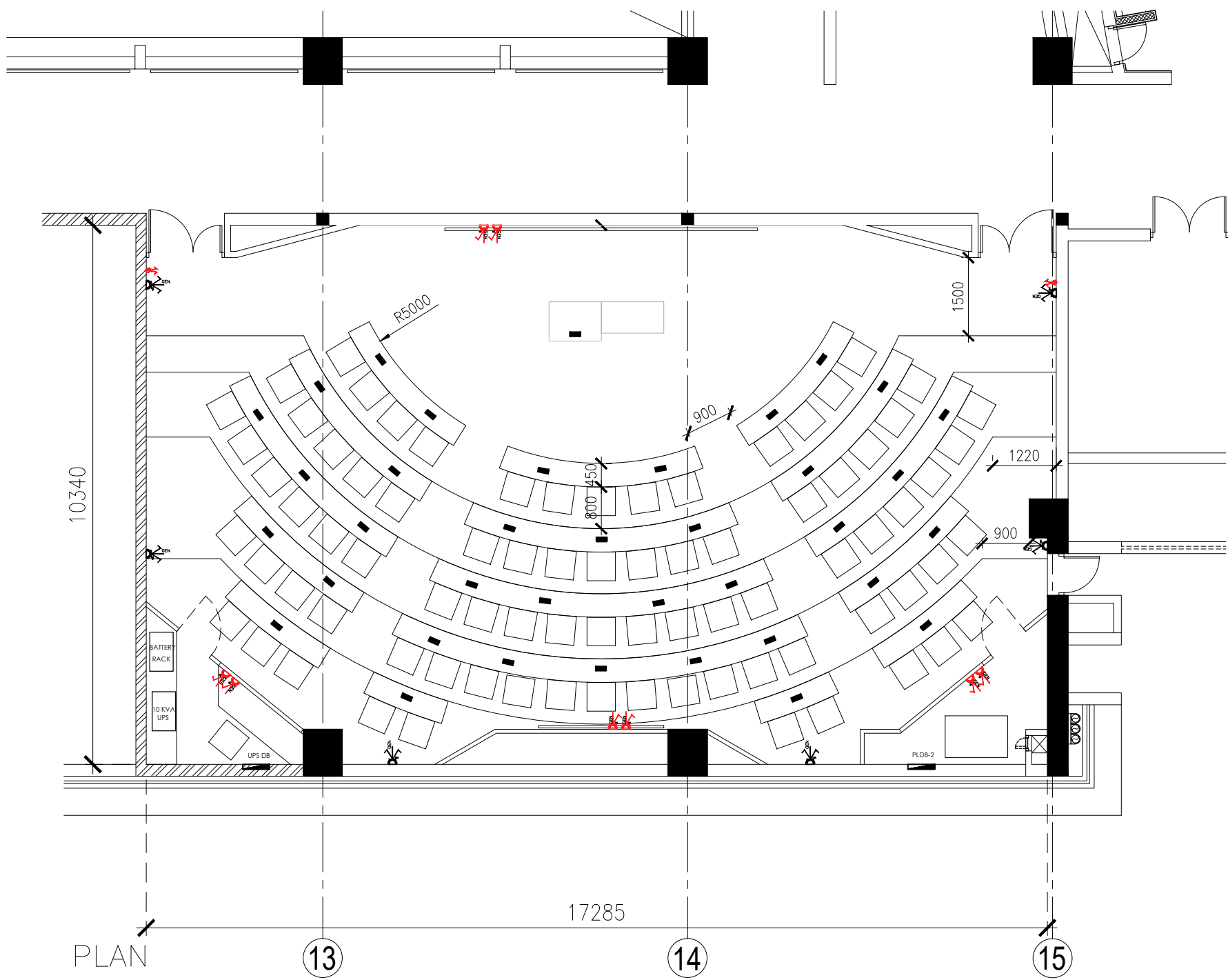


LAYOUT SHOWING TABLE DIMENSIONS

TABLES IN 18MM PLY TABLE TOP IN LAMINATE FINISH, HELD BY 63MM DIA. HOLLOW PIPES FOR SUPPORTS, 40 X 50 MM STIFFENER CONNECTING LEGS AND BOOK TRAY UNDER THE TABLE IN MS AND MODESTY PANEL USING 18MM PLY FINISHED WITH LAMINATE

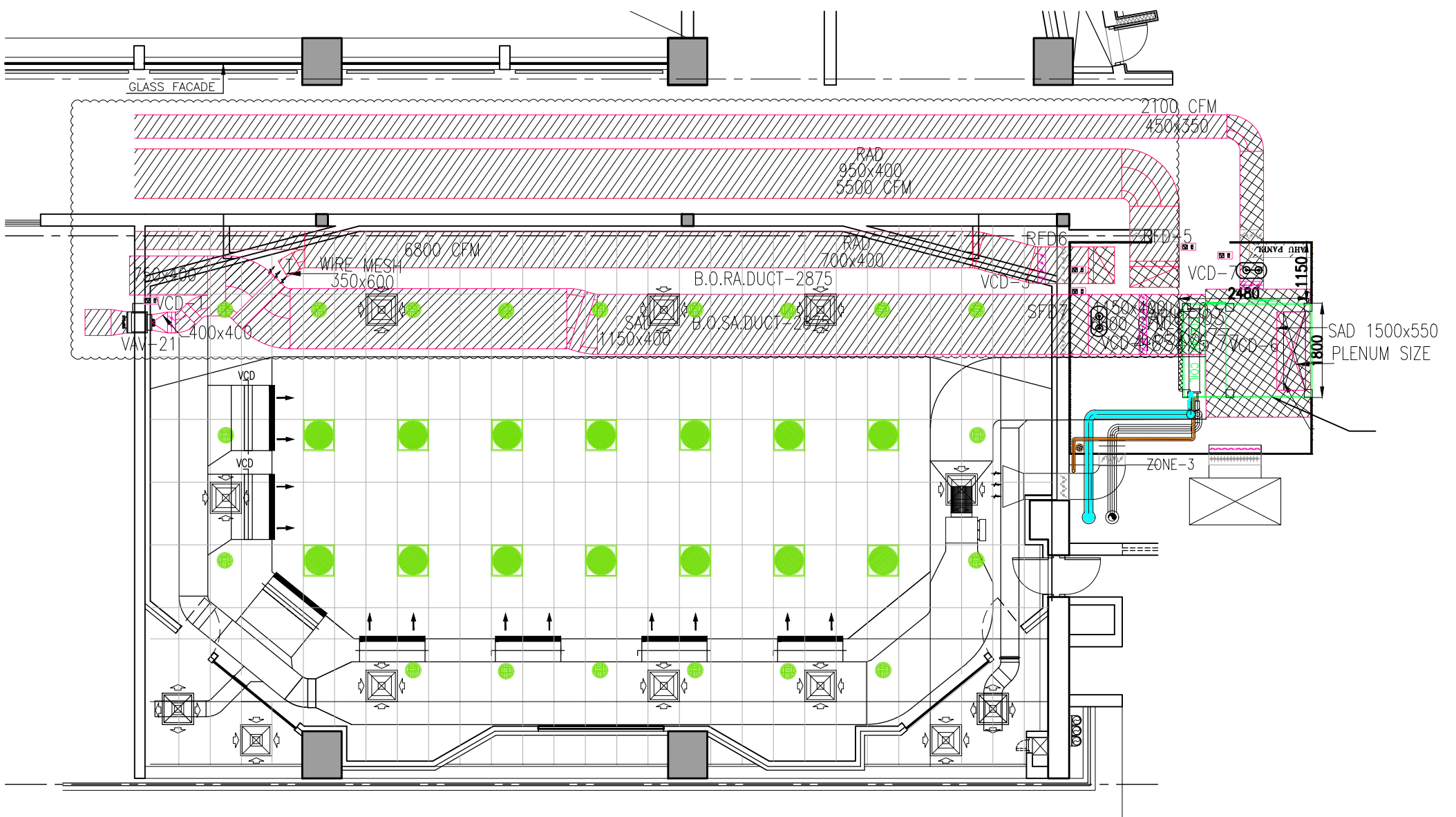


TYPICAL SECTION THROUGH TABLE
SCALE 1: 10







LEGEND

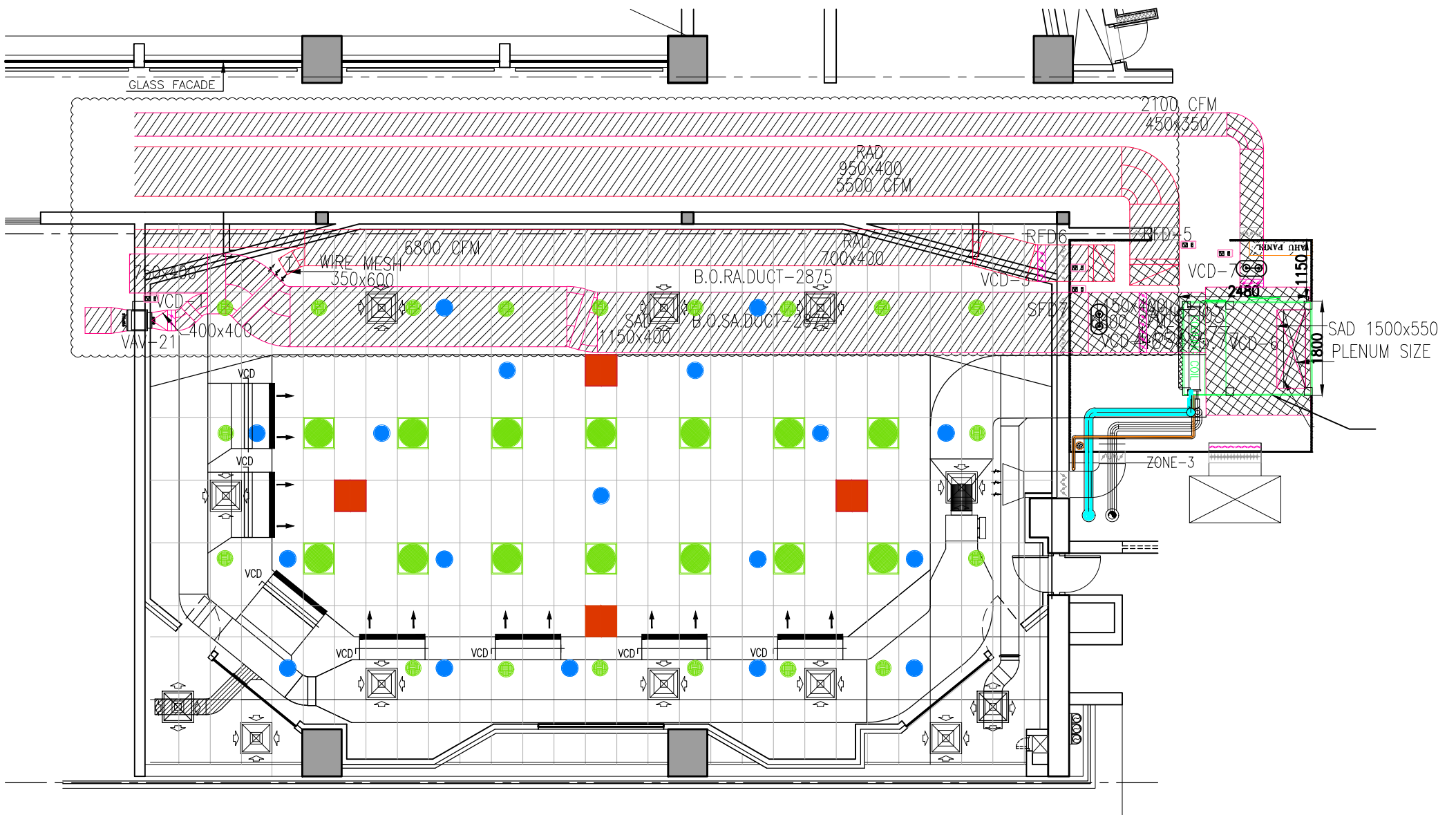
SYMBOL	DESCRIPTION	MOUNTING HEIGHT
	2 X 2 LED LIGHT FIXTURE	RECESS MOUNTED
	20W WALL MOUNTED LED LIGHT FIXTURE	RECESS MOUNTED
	15W LED DOWN LIGHT FIXTURE	RECESS MOUNTED
	DISTRIBUTION BOARD	1500mm FFL(BOTTOM)
	6A SWITCH	+ 1200 / 600 mm
	6A SWITCH - EMERGENCY	+ 1200 / 600 mm
	6A SWITCH - TWO WAY	+ 1200 / 600 mm
	5A SOCKET FOR GENERAL	+ 1200 / 600 mm
	16A SOCKET FOR GENERAL	+ 1200 / 600 mm
	5A UPS SOCKET FOR GENERAL	+ 2300 mm
EL	EMERGENCY LIGHT	



HVAC AND LIGHTING LAYOUT




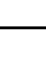
LEGEND

	2 X 2 LED FIXTURES
	SPOT LIGHT FIXTURES
	BEAM FORMING MICS
	SPEAKERS



CO-ORDINATED FALSE CEILING LAYOUT

LEGEND

	2 X 2 LED FIXTURES
	SPOT LIGHT FIXTURES
	BEAM FORMING MICS
	SPEAKERS