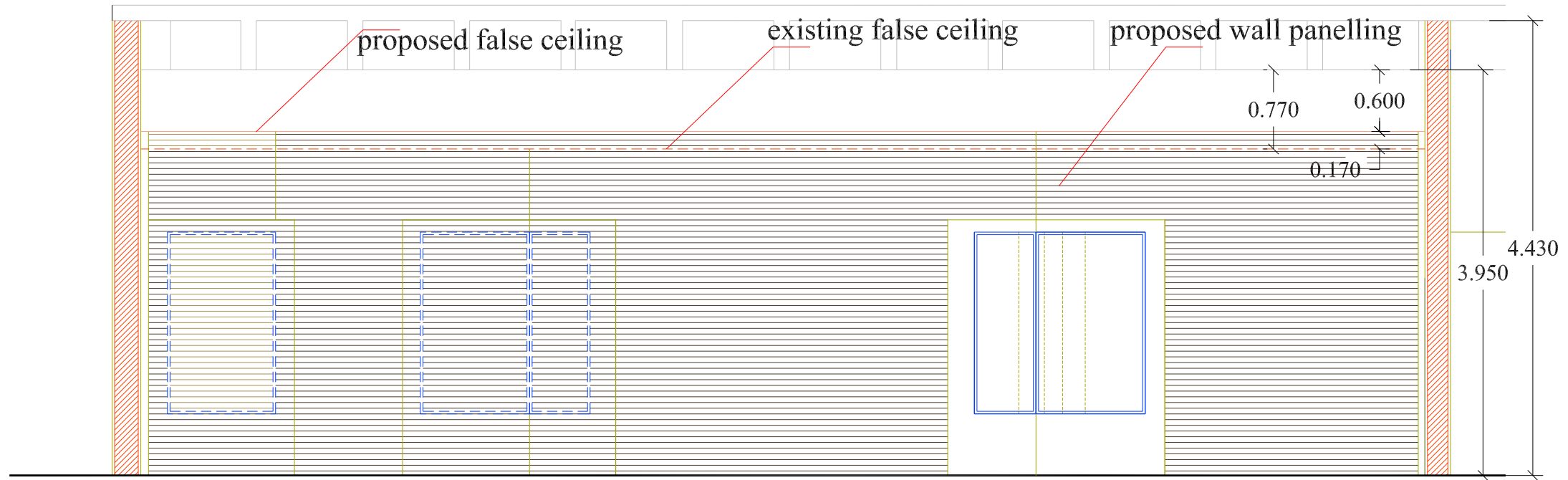
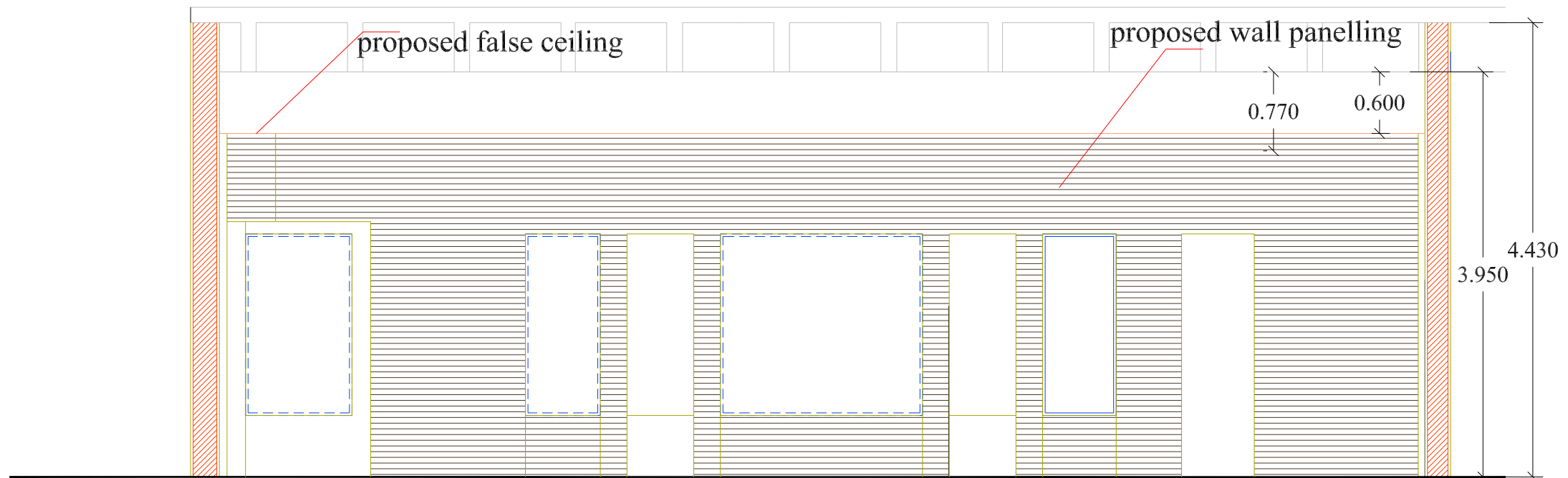


GROUND FLOOR HALL -3 AND MULTIPURPOSE HALL

SAROJ Forum
 architect and interiors designers
 chennai-83
 sarojforum@yahoo.com
 vimal_opilla@yahoo.com
 91-9841613716



GROUND FLOOR MULTIPURPOSE HALL SECTION A-A



GROUND FLOOR HALL - 3 SECTION B-B

UPS ROOM
1.80X1.91

LIFT

D

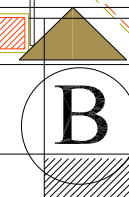
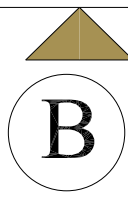
W

W

W

W

D



11.570

11.748

HALL -3

D

D

EMERGENCY DOOR

GROUND FLOOR HALL-3

Tile flooring layout

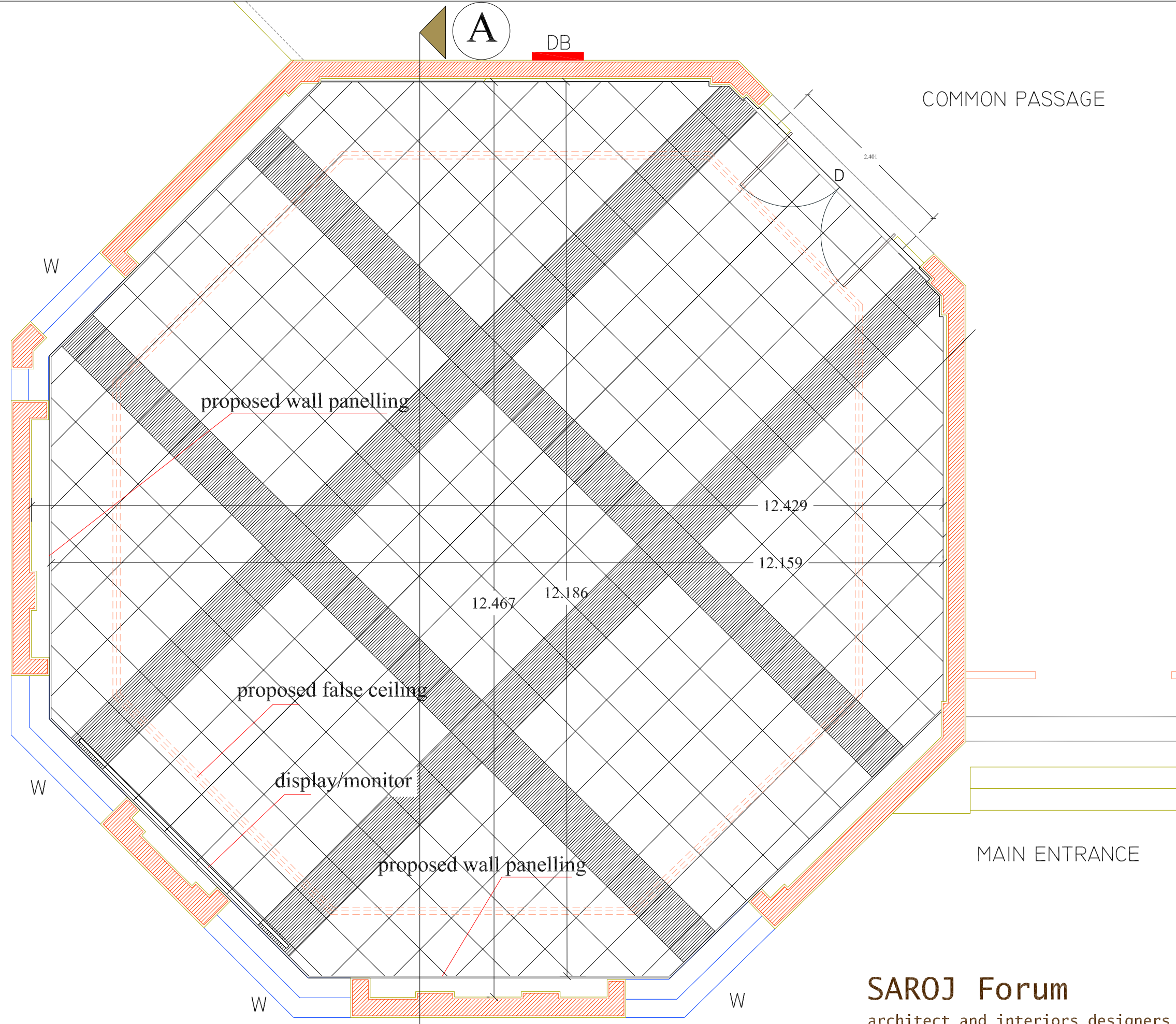
W

W

W

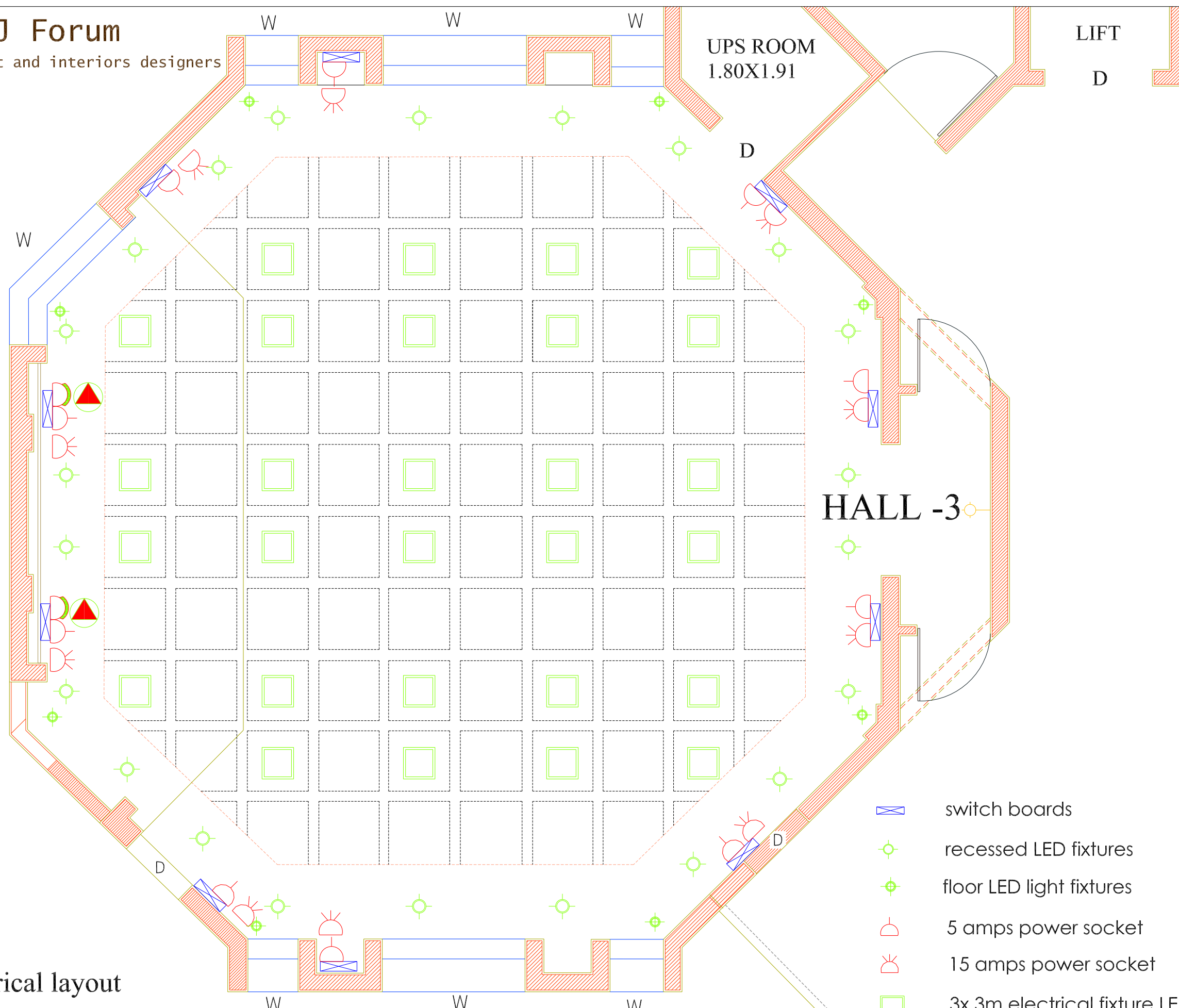
SAROJ Forum

architect and interiors designers
chennai-83
sarojforum@yahoo.com
vimal_opilla@yahoo.com
91-9841613716



GROUND FLOOR MULTIPURPOSE HALL
 Tile flooring layout

SAROJ Forum
 architect and interiors designers
 chennai-83
 sarojforum@yahoo.com
 vimal_opilla@yahoo.com
 91-9841613716



UPS ROOM
1.80X1.91

LIFT
D

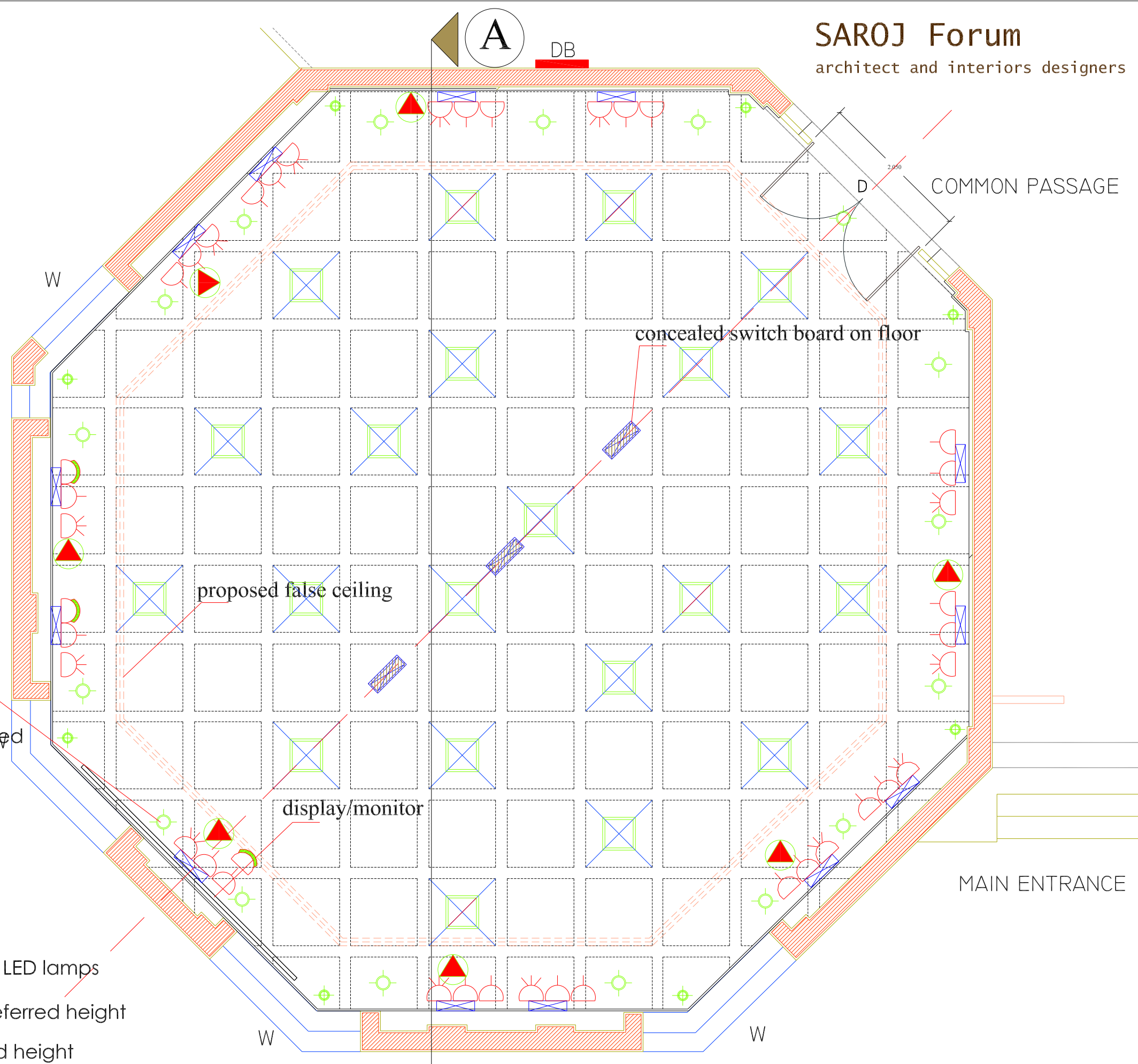
HALL - 3

electrical layout

GROUND FLOOR HALL - 3

AUDIO VIDEO PROVISIONS IN CONFERENCES WITH SPEAKER POINTS COMPLETE AS APPROVED
A/C ELECTRICAL SUPPLY POINT TO BE ADDED AT SUITABLE LOCATIONS

- switch boards
- recessed LED fixtures
- floor LED light fixtures
- 5 amps power socket
- 15 amps power socket
- .3x.3m electrical fixture LED lamps
- telephone point at preferred height
- data point at preferred height



- recessed led washers
- switch boards concealed
- switch boards
- recessed LED fixtures
- floor LED light fixtures
- 5 amps power socket
- 15 amps power socket
- .3x.3m electrical fixture LED lamps
- telephone point at preferred height
- data point at preferred height

AUDIO VIDEO PROVISIONS IN CONFERENCES, WITH SPEAKER POINTS COMPLETE AS APPROVED
A/C ELECTRICAL SUPPLY POINT TO BE ADDED AT SUITABLE LOCATIONS