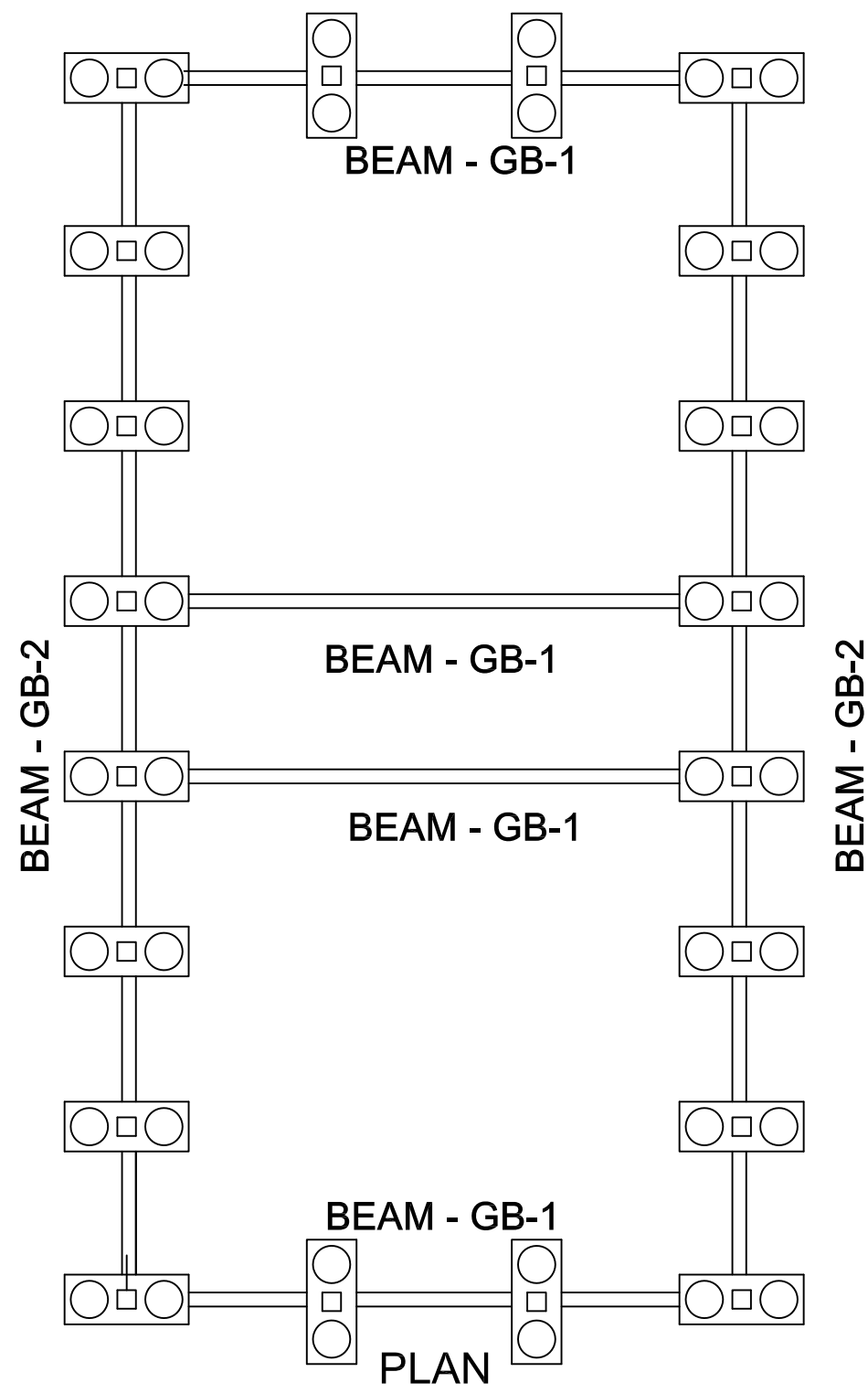


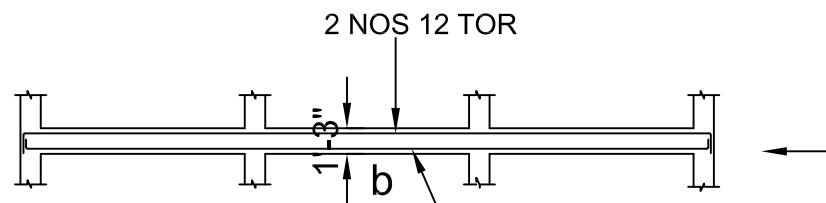
TYPICAL CROSS SECTION OF BEAM



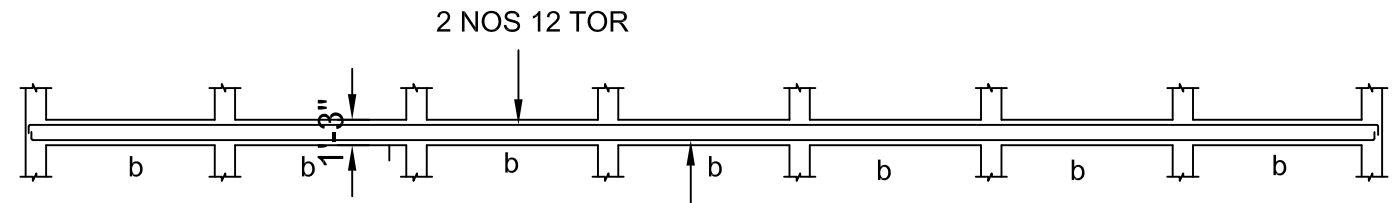
COVER - 30 MM

DETAILS OF GRADE BEAMS

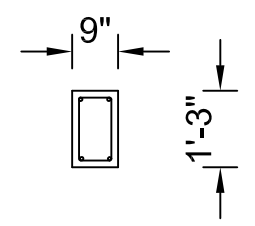
DESIGNED K. B	CHECKED	<u>DRG NO</u> COM PLNT/ STU-002
DRAWN K. B	APPROVED	<u>REV NO</u> R0 Dated - 23-02-2016



BEAM - LB-1 (9"x15")

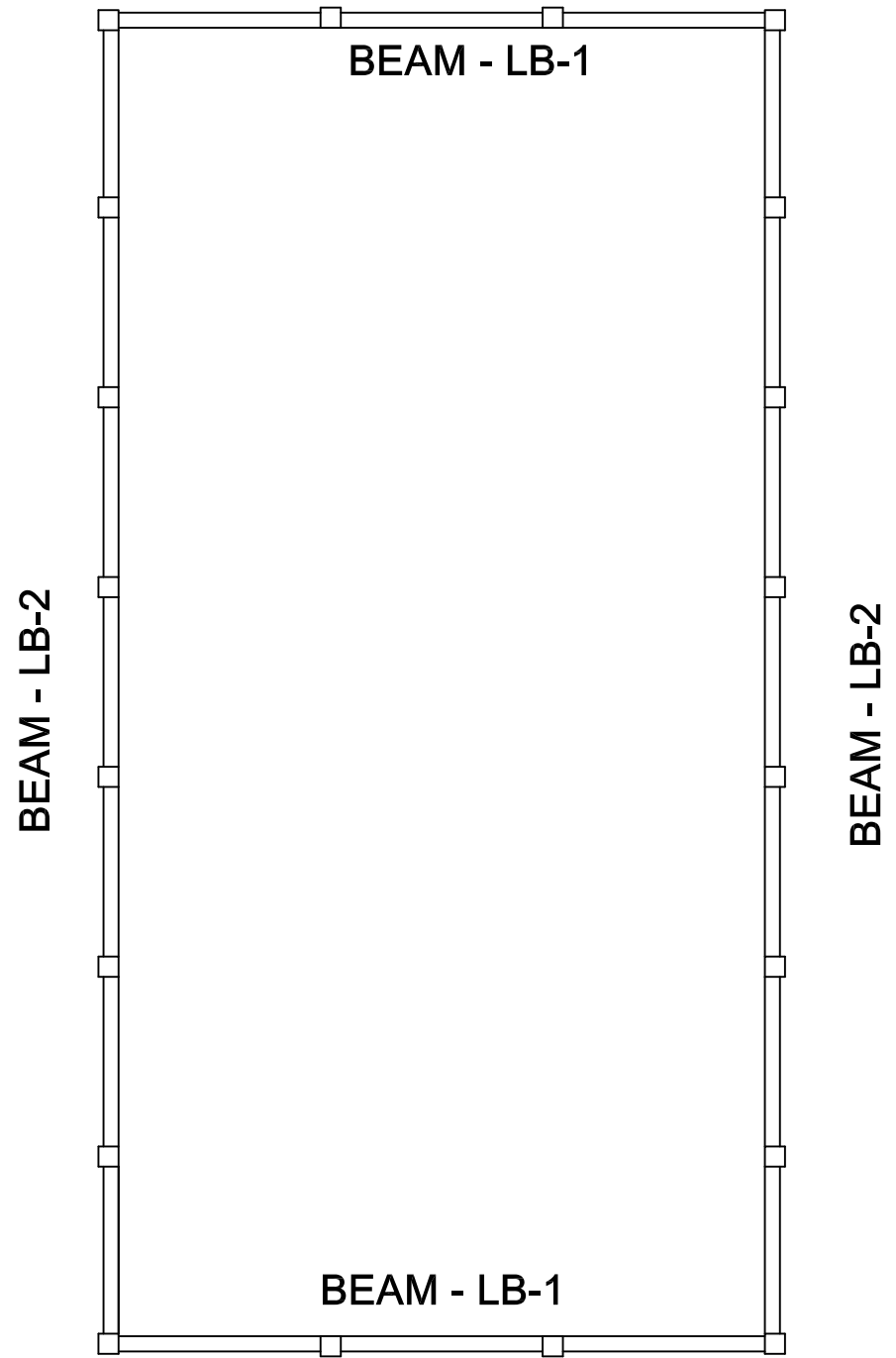


BEAM - GB-2 (9"x15")



TYPICAL CROSS SECTION OF BEAM

CONCRETE - M 20 GRADE
 STEEL - Fe 415/500 GRADE
COVER
 GRADE BEAM - 30 MM
 COLUMN - 40 MM

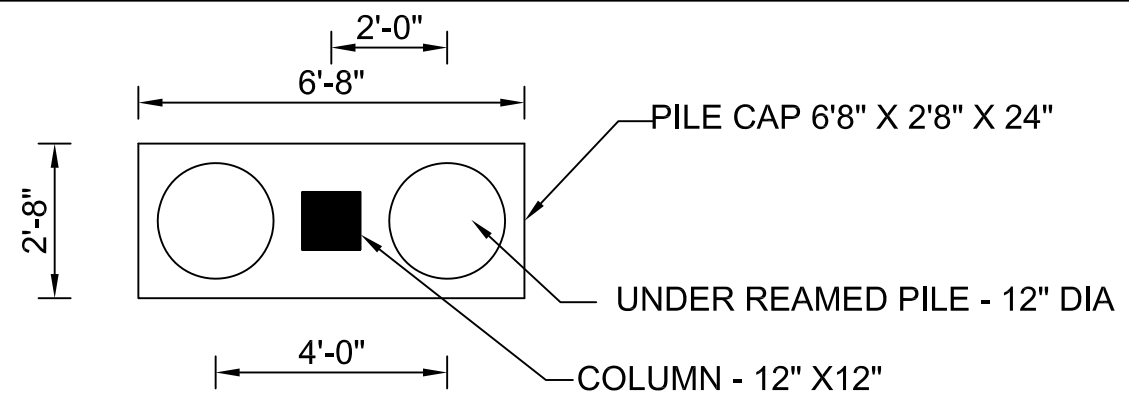


PLAN

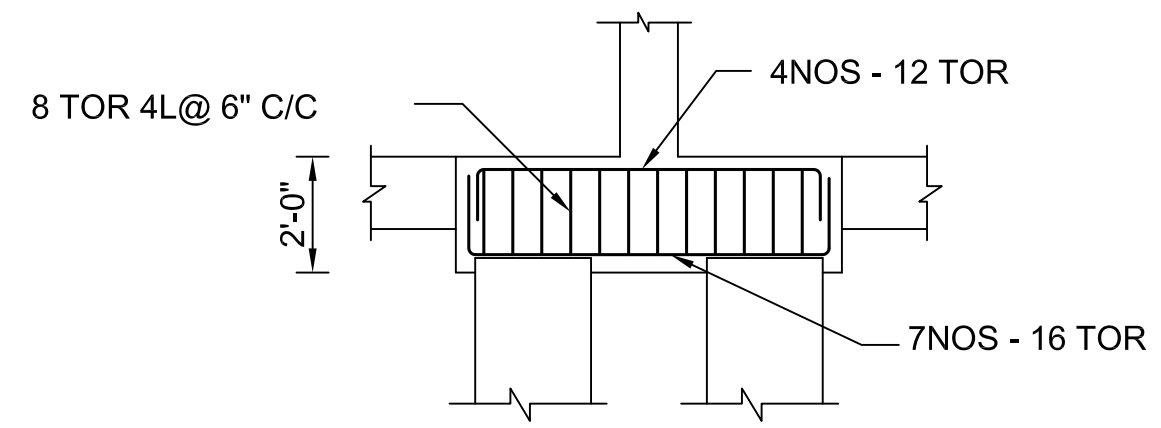
CONSTRUCTION OF COMPOSTING PLANT AT VICHOOR VILLAGE

DETAILS OF LINTEL BEAMS

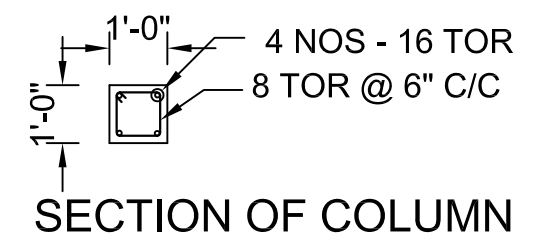
DESIGNED K. B	CHECKED	<u>DRG NO</u> COM PLNT/ STU-002
DRAWN K. B	APPROVED	<u>REV NO</u> R0 Dated - 23-02-2016



PILE CAP PLAN

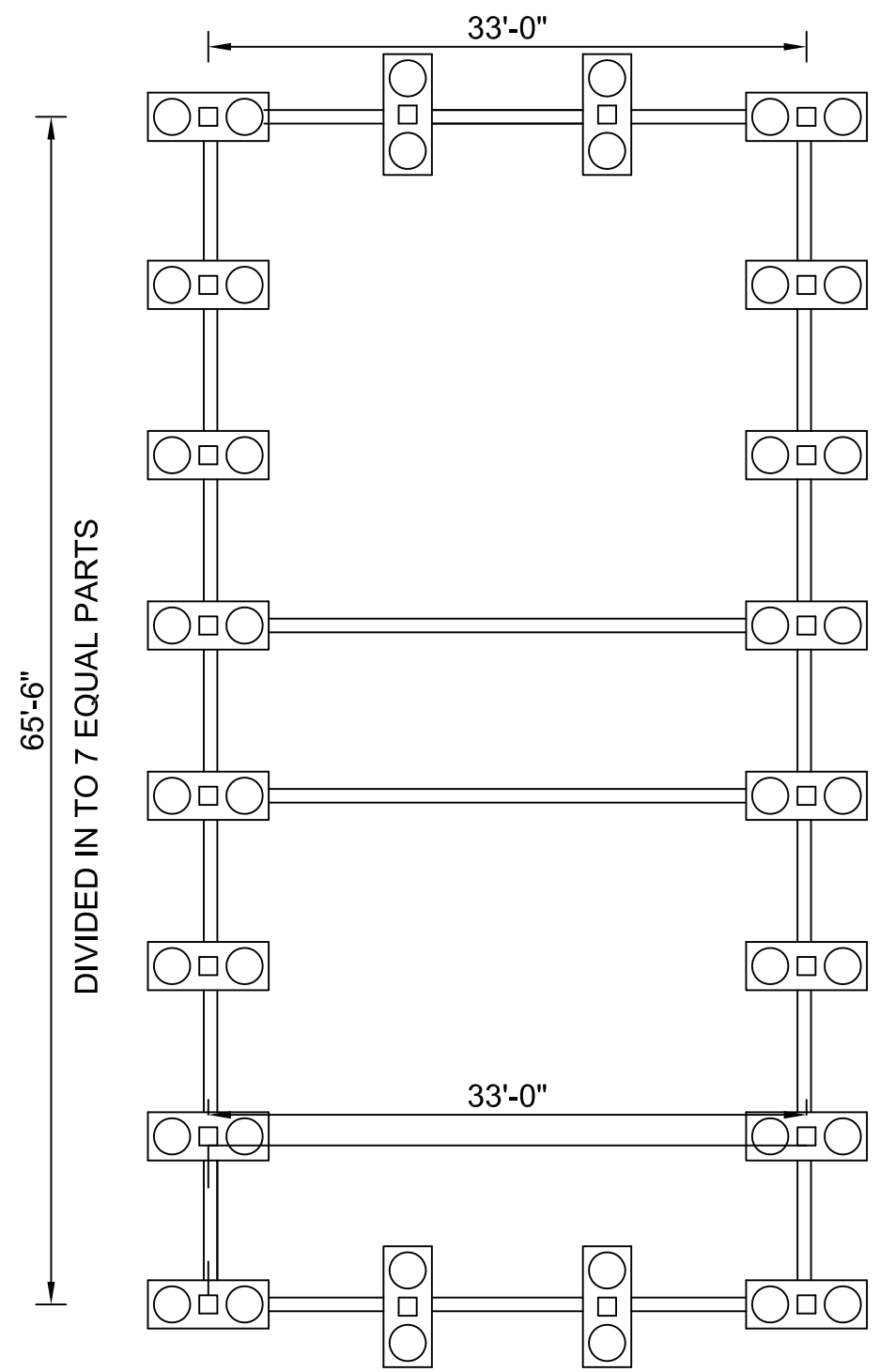


SECTION OF PILE CAP

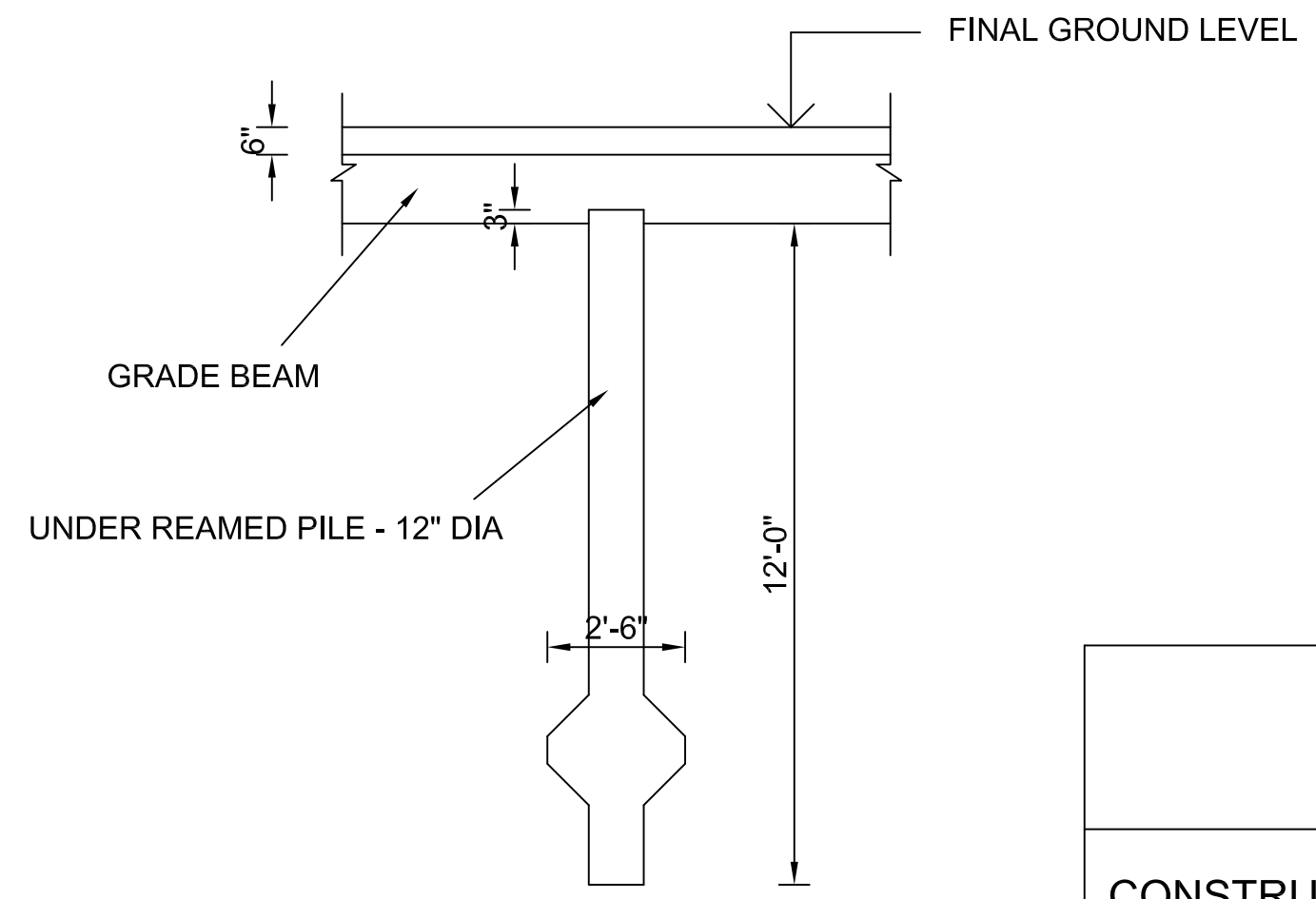


SECTION OF COLUMN

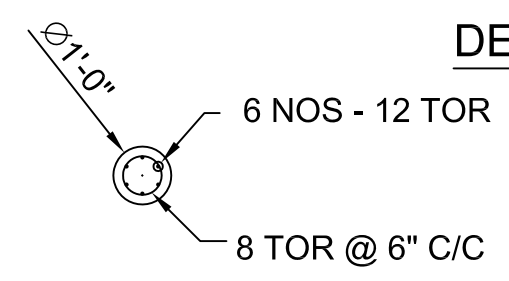
CONCRETE - M 20 GRADE
 STEEL - Fe 415/500 GRADE
 COVER
 FOUNDATION - 50MM
 GRADE BEAM - 30 MM
 COLUMN - 40 MM



PLAN

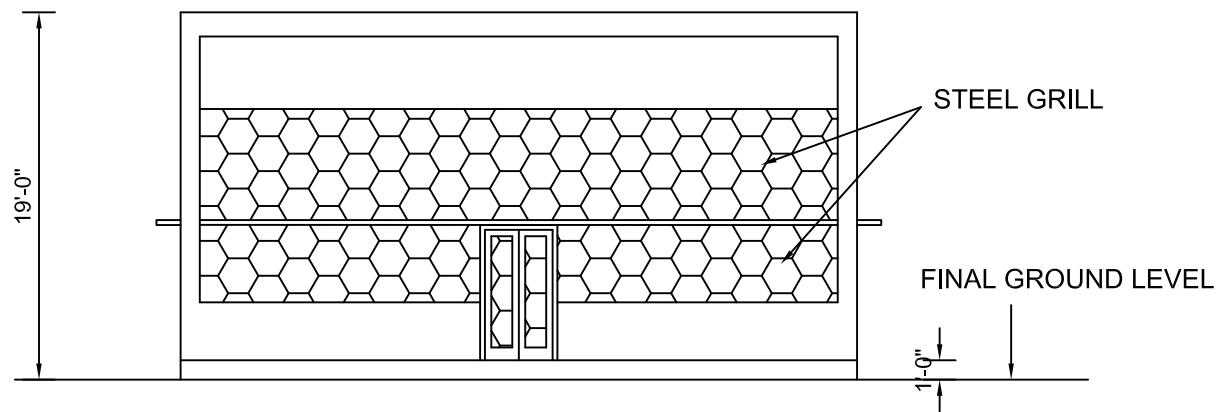


DETAIL OF PILE

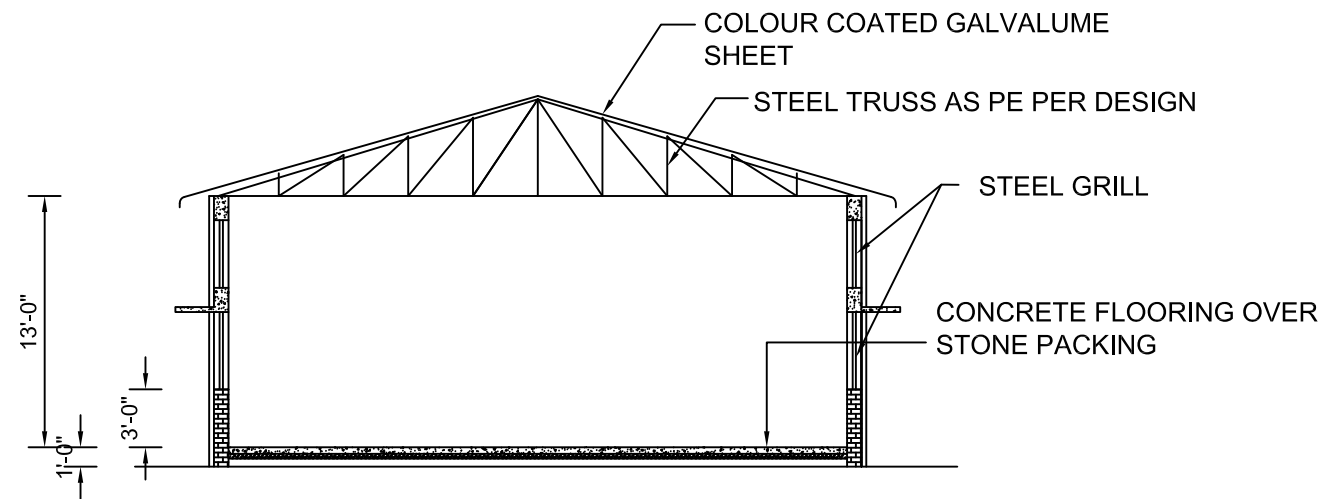


SECTION OF PILE

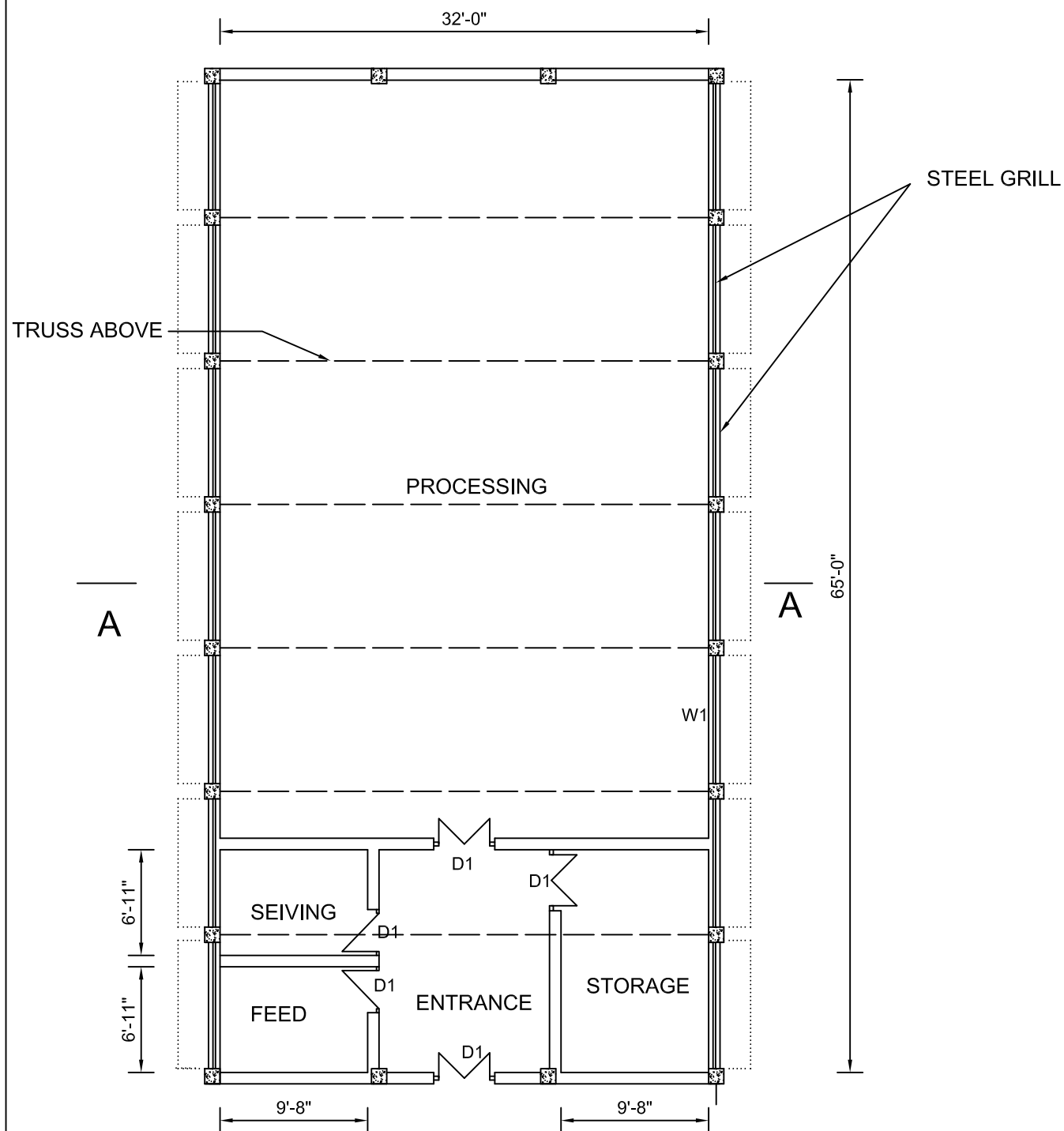
CONSTRUCTION OF COMPOSTING PLANT AT VICHOOR VILLAGE		
DETAILS OF FOUNDATION		
DESIGNED K. B	CHECKED	DRG NO COM PLNT/ STU-001
DRAWN K. B	APPROVED	REV NO R0 Dated - 15-02-2016



ELEVATION



SECTION - AA



PLAN

D1 -DOOR - 4'0" X 7'0"

D2- DOOR - 4'0" X7'0"

W1- WINDOW 3'0"X4'0"

CONSTRUCTION OF COMPOSTING PLANT AT VICHOOR VILLAGE

GENERAL PLAN

DESIGNED
K. B

CHECKED
APPROVED

DRG NO
COM PLNT/ ARCH-001

REV NO
R1 Dated - 23-02-2016